

Anti-OR5L1/OR5L2 antibody (55-104) (STJ94775)

STJ94775

GENERAL INFORMATION

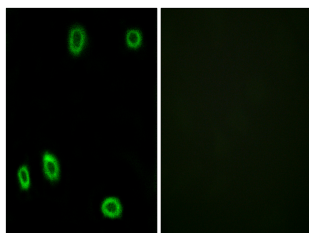
Product Type	Primary antibodies
Short Description	Rabbit polyclonal antibody anti-Olfactory receptor 5L1/2 (55-104) is suitable for use in Immunofluorescence and ELISA research applications.
Applications	IF/ELISA
Host/Source	Rabbit
Reactivity	Human/Rat/Mouse

PRODUCT PROPERTIES

Clonality	Polyclonal
Clone ID	
Concentration	1 mg/mL
Conjugation	Unconjugated
Purification	The antibody was affinity-purified from rabbit antiserum by affinity-chromatography using epitope-specific immunogen.
Dilution Range	IF 1:200-1:1000 ELISA 1:5000
Formulation	Liquid in PBS containing 50% Glycerol, 0.5% BSA and 0.02% Sodium Azide.
Isotype	IgG
Storage Instruction	Store at -20°C for up to 1 year from the date of receipt, and avoid repeat freeze-thaw cycles.

TARGET INFORMATION

Gene ID	26338 219437
Gene Symbol	OR5L2 OR5L1
Uniprot ID	OR5L2_HUMAN OR5L1_HUMAN
Immunogen	The antiserum was produced against synthesized peptide derived from human OR5L1/2. AA range:55-104
Immunogen Region	55-104
Specificity	Olfactory receptor 5L1/2 Polyclonal Antibody detects endogenous levels of Olfactory receptor 5L1/2 protein.
Immunogen Sequence	



Immunofluorescence analysis of HUVEC cells, using OR5L1/2 Antibody. The picture on the right is blocked with the synthesized peptide.

This product is suitable for in-vitro studies under the RESEARCH USE ONLY [RUO] licence. This product must not be used as for diagnostic or other medical purposes.
St John's Laboratory Ltd, Knowledge Dock Business Centre, University Way, London, E16 2RD | Tel: 0208 223 3081