

## Anti-OR5H15 antibody (241-290) (STJ94770)

STJ94770

### GENERAL INFORMATION

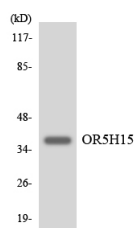
<b>Product Type</b>	Primary antibodies
<b>Short Description</b>	Rabbit polyclonal antibody anti-Olfactory receptor 5H15 (241-290) is suitable for use in Western Blot, Immunofluorescence and ELISA research applications.
<b>Applications</b>	WB/IF/ELISA
<b>Host/Source</b>	Rabbit
<b>Reactivity</b>	Human/Rat/Mouse

### PRODUCT PROPERTIES

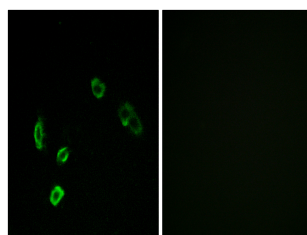
<b>Clonality</b>	Polyclonal
<b>Clone ID</b>	
<b>Concentration</b>	1 mg/mL
<b>Conjugation</b>	Unconjugated
<b>Purification</b>	The antibody was affinity-purified from rabbit antiserum by affinity-chromatography using epitope-specific immunogen.
<b>Dilution Range</b>	WB 1:500-1:2000 IF 1:200-1:1000 ELISA 1:5000
<b>Formulation</b>	Liquid in PBS containing 50% Glycerol, 0.5% BSA and 0.02% Sodium Azide.
<b>Isotype</b>	IgG
<b>Storage Instruction</b>	Store at -20°C for up to 1 year from the date of receipt, and avoid repeat freeze-thaw cycles.

### TARGET INFORMATION

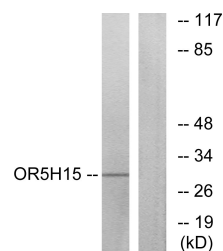
<b>Gene ID</b>	403274
<b>Gene Symbol</b>	OR5H15
<b>Uniprot ID</b>	O5H15_HUMAN
<b>Immunogen</b>	The antiserum was produced against synthesized peptide derived from human OR5H15. AA range:241-290
<b>Immunogen Region</b>	241-290
<b>Specificity</b>	Olfactory receptor 5H15 Polyclonal Antibody detects endogenous levels of Olfactory receptor 5H15 protein.
<b>Immunogen Sequence</b>	



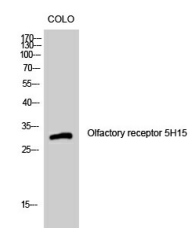
Western blot analysis of the lysates from HeLa cells using OR5H15 antibody.



Immunofluorescence analysis of MCF7 cells, using OR5H15 Antibody. The picture on the right is blocked with the synthesized peptide.



Western blot analysis of lysates from COLO cells, using OR5H15 Antibody. The lane on the right is blocked with the synthesized peptide.



Western blot analysis of COLO cells using Olfactory receptor 5H15 Polyclonal Antibody