

Anti-OR52E6 antibody (264-313) (STJ94747)

STJ94747

GENERAL INFORMATION

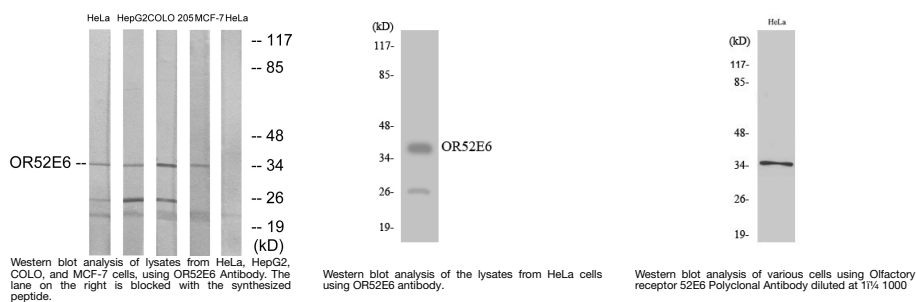
| | |
|--------------------------|--|
| Product Type | Primary antibodies |
| Short Description | Rabbit polyclonal antibody anti-Olfactory receptor 52E6 (264-313) is suitable for use in Western Blot and ELISA research applications. |
| Applications | WB/ELISA |
| Host/Source | Rabbit |
| Reactivity | Human/Rat/Mouse |

PRODUCT PROPERTIES

| | |
|----------------------------|---|
| Clonality | Polyclonal |
| Clone ID | |
| Concentration | 1 mg/mL |
| Conjugation | Unconjugated |
| Purification | The antibody was affinity-purified from rabbit antiserum by affinity-chromatography using epitope-specific immunogen. |
| Dilution Range | WB 1:500-1:2000 ELISA 1:10000 |
| Formulation | Liquid in PBS containing 50% Glycerol, 0.5% BSA and 0.02% Sodium Azide. |
| Isotype | IgG |
| Storage Instruction | Store at -20°C for up to 1 year from the date of receipt, and avoid repeat freeze-thaw cycles. |

TARGET INFORMATION

| | |
|---------------------------|---|
| Gene ID | 390078 |
| Gene Symbol | OR52E6 |
| Uniprot ID | O52E6_HUMAN |
| Immunogen | The antiserum was produced against synthesized peptide derived from human OR52E6. AA range:264-313 |
| Immunogen Region | 264-313 |
| Specificity | Olfactory receptor 52E6 Polyclonal Antibody detects endogenous levels of Olfactory receptor 52E6 protein. |
| Immunogen Sequence | |



This product is suitable for in-vitro studies under the RESEARCH USE ONLY [RUO] licence. This product must not be used as for diagnostic or other medical purposes.
St John's Laboratory Ltd, Knowledge Dock Business Centre, University Way, London, E16 2RD | Tel: 0208 223 3081