

## Anti-OR52E4 antibody (200-249) (STJ94745)

STJ94745

### GENERAL INFORMATION

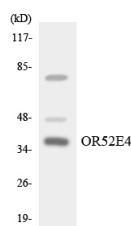
<b>Product Type</b>	Primary antibodies
<b>Short Description</b>	Rabbit polyclonal antibody anti-Olfactory receptor 52E4 (200-249) is suitable for use in Western Blot, Immunofluorescence and ELISA research applications.
<b>Applications</b>	WB/IF/ELISA
<b>Host/Source</b>	Rabbit
<b>Reactivity</b>	Human/Rat/Mouse

### PRODUCT PROPERTIES

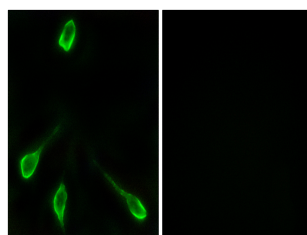
<b>Clonality</b>	Polyclonal
<b>Clone ID</b>	
<b>Concentration</b>	1 mg/mL
<b>Conjugation</b>	Unconjugated
<b>Purification</b>	The antibody was affinity-purified from rabbit antiserum by affinity-chromatography using epitope-specific immunogen.
<b>Dilution Range</b>	WB 1:500-1:2000 IF 1:200-1:1000 ELISA 1:20000
<b>Formulation</b>	Liquid in PBS containing 50% Glycerol, 0.5% BSA and 0.02% Sodium Azide.
<b>Isotype</b>	IgG
<b>Storage Instruction</b>	Store at -20°C for up to 1 year from the date of receipt, and avoid repeat freeze-thaw cycles.

### TARGET INFORMATION

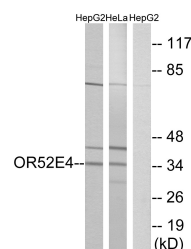
<b>Gene ID</b>	390081
<b>Gene Symbol</b>	OR52E4
<b>Uniprot ID</b>	O52E4_HUMAN
<b>Immunogen</b>	The antiserum was produced against synthesized peptide derived from human OR52E4. AA range:200-249
<b>Immunogen Region</b>	200-249
<b>Specificity</b>	Olfactory receptor 52E4 Polyclonal Antibody detects endogenous levels of Olfactory receptor 52E4 protein.
<b>Immunogen Sequence</b>	



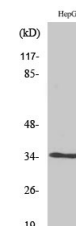
Western blot analysis of the lysates from HT-29 cells using OR52E4 antibody.



Immunofluorescence analysis of LOVO cells, using OR52E4 Antibody. The picture on the right is blocked with the synthesized peptide.



Western blot analysis of lysates from HepG2 and HeLa cells, using OR52E4 Antibody. The lane on the right is blocked with the synthesized peptide.



Western blot analysis of various cells using Olfactory receptor 52E4 Polyclonal Antibody diluted at 1:10,000