

Anti-OR4D6 antibody (260-309) (STJ94706)

STJ94706

GENERAL INFORMATION

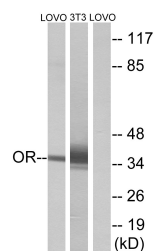
Product Type	Primary antibodies
Short Description	Rabbit polyclonal antibody anti-Olfactory receptor 4D6 (260-309) is suitable for use in Western Blot and ELISA research applications.
Applications	WB/ELISA
Host/Source	Rabbit
Reactivity	Human/Rat/Mouse

PRODUCT PROPERTIES

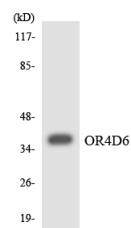
Clonality	Polyclonal
Clone ID	
Concentration	1 mg/mL
Conjugation	Unconjugated
Purification	The antibody was affinity-purified from rabbit antiserum by affinity-chromatography using epitope-specific immunogen.
Dilution Range	WB 1:500-1:2000 ELISA 1:20000
Formulation	Liquid in PBS containing 50% Glycerol, 0.5% BSA and 0.02% Sodium Azide.
Isotype	IgG
Storage Instruction	Store at -20°C for up to 1 year from the date of receipt, and avoid repeat freeze-thaw cycles.

TARGET INFORMATION

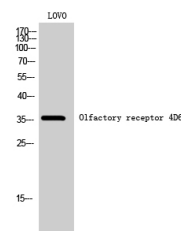
Gene ID	219983
Gene Symbol	OR4D6
Uniprot ID	OR4D6_HUMAN
Immunogen	The antiserum was produced against synthesized peptide derived from human OR4D6. AA range:260-309
Immunogen Region	260-309
Specificity	Olfactory receptor 4D6 Polyclonal Antibody detects endogenous levels of Olfactory receptor 4D6 protein.
Immunogen Sequence	



Western blot analysis of lysates from LOVO and NIH/3T3 cells, using OR4D6 Antibody. The lane on the right is blocked with the synthesized peptide.



Western blot analysis of the lysates from HT-29 cells using OR4D6 antibody.



Western blot analysis of LOVO cells using Olfactory receptor 4D6 Polyclonal Antibody

This product is suitable for in-vitro studies under the RESEARCH USE ONLY [RUO] licence. This product must not be used as for diagnostic or other medical purposes.
St John's Laboratory Ltd, Knowledge Dock Business Centre, University Way, London, E16 2RD | Tel: 0208 223 3081