

## Anti-OR4C12 antibody (260-309) (STJ94699)

STJ94699

### GENERAL INFORMATION

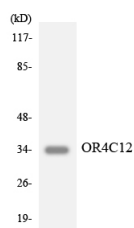
<b>Product Type</b>	Primary antibodies
<b>Short Description</b>	Rabbit polyclonal antibody anti-Olfactory receptor 4C12 (260-309) is suitable for use in Western Blot, Immunofluorescence and ELISA research applications.
<b>Applications</b>	WB/IF/ELISA
<b>Host/Source</b>	Rabbit
<b>Reactivity</b>	Human/Rat/Mouse

### PRODUCT PROPERTIES

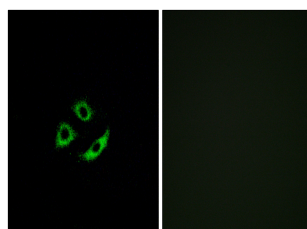
<b>Clonality</b>	Polyclonal
<b>Clone ID</b>	
<b>Concentration</b>	1 mg/mL
<b>Conjugation</b>	Unconjugated
<b>Purification</b>	The antibody was affinity-purified from rabbit antiserum by affinity-chromatography using epitope-specific immunogen.
<b>Dilution Range</b>	WB 1:500-1:2000 IF 1:200-1:1000 ELISA 1:20000
<b>Formulation</b>	Liquid in PBS containing 50% Glycerol, 0.5% BSA and 0.02% Sodium Azide.
<b>Isotype</b>	IgG
<b>Storage Instruction</b>	Store at -20°C for up to 1 year from the date of receipt, and avoid repeat freeze-thaw cycles.

### TARGET INFORMATION

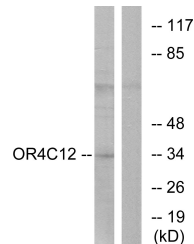
<b>Gene ID</b>	283093
<b>Gene Symbol</b>	OR4C12
<b>Uniprot ID</b>	OR4CC_HUMAN
<b>Immunogen</b>	The antiserum was produced against synthesized peptide derived from human OR4C12. AA range:260-309
<b>Immunogen Region</b>	260-309
<b>Specificity</b>	Olfactory receptor 4C12 Polyclonal Antibody detects endogenous levels of Olfactory receptor 4C12 protein.
<b>Immunogen Sequence</b>	



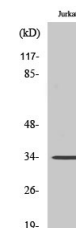
Western blot analysis of the lysates from 293 cells using OR4C12 antibody.



Immunofluorescence analysis of A549 cells, using OR4C12 Antibody. The picture on the right is blocked with the synthesized peptide.



Western blot analysis of lysates from Jurkat cells, using OR4C12 Antibody. The lane on the right is blocked with the synthesized peptide.



Western blot analysis of various cells using Olfactory receptor 4C12 Polyclonal Antibody