

Anti-OR2Z1 antibody (201-250) (STJ94692)

STJ94692

GENERAL INFORMATION

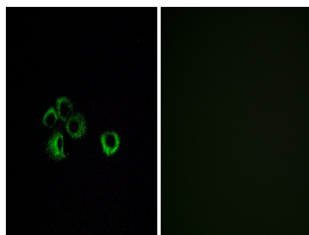
Product Type	Primary antibodies
Short Description	Rabbit polyclonal antibody anti-Olfactory receptor 2Z1 (201-250) is suitable for use in Immunofluorescence and ELISA research applications.
Applications	IF/ELISA
Host/Source	Rabbit
Reactivity	Human/Rat/Mouse

PRODUCT PROPERTIES

Clonality	Polyclonal
Clone ID	
Concentration	1 mg/mL
Conjugation	Unconjugated
Purification	The antibody was affinity-purified from rabbit antiserum by affinity-chromatography using epitope-specific immunogen.
Dilution Range	IF 1:200-1:1000 ELISA 1:10000
Formulation	Liquid in PBS containing 50% Glycerol, 0.5% BSA and 0.02% Sodium Azide.
Isotype	IgG
Storage Instruction	Store at -20°C for up to 1 year from the date of receipt, and avoid repeat freeze-thaw cycles.

TARGET INFORMATION

Gene ID	284383
Gene Symbol	OR2Z1
Uniprot ID	OR2Z1_HUMAN
Immunogen	The antiserum was produced against synthesized peptide derived from human OR2Z1. AA range:201-250
Immunogen Region	201-250
Specificity	Olfactory receptor 2Z1 Polyclonal Antibody detects endogenous levels of Olfactory receptor 2Z1 protein.
Immunogen Sequence	



Immunofluorescence analysis of MCF7 cells, using OR2Z1 Antibody. The picture on the right is blocked with the synthesized peptide.

This product is suitable for in-vitro studies under the RESEARCH USE ONLY [RUO] licence. This product must not be used as for diagnostic or other medical purposes.
St John's Laboratory Ltd, Knowledge Dock Business Centre, University Way, London, E16 2RD | Tel: 0208 223 3081