

Anti-OR21P antibody (261-310) (STJ94674)

STJ94674

GENERAL INFORMATION

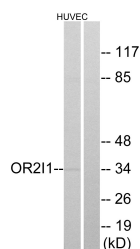
Product Type	Primary antibodies
Short Description	Rabbit polyclonal antibody anti-Putative olfactory receptor 211 (261-310) is suitable for use in Western Blot, Immunofluorescence and ELISA research applications.
Applications	WB/IF/ELISA
Host/Source	Rabbit
Reactivity	Human/Rat/Mouse

PRODUCT PROPERTIES

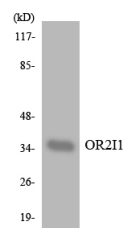
Clonality	Polyclonal
Clone ID	
Concentration	1 mg/mL
Conjugation	Unconjugated
Purification	The antibody was affinity-purified from rabbit antiserum by affinity-chromatography using epitope-specific immunogen.
Dilution Range	WB 1:500-1:2000 IF 1:200-1:1000 ELISA 1:20000
Formulation	Liquid in PBS containing 50% Glycerol, 0.5% BSA and 0.02% Sodium Azide.
Isotype	IgG
Storage Instruction	Store at -20°C for up to 1 year from the date of receipt, and avoid repeat freeze-thaw cycles.

TARGET INFORMATION

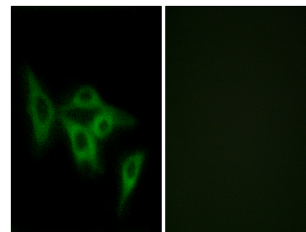
Gene ID	
Gene Symbol	OR21P
Uniprot ID	OR211_HUMAN
Immunogen	The antiserum was produced against synthesized peptide derived from human OR211. AA range:261-310
Immunogen Region	261-310
Specificity	Olfactory receptor 211 Polyclonal Antibody detects endogenous levels of Olfactory receptor 211 protein.
Immunogen Sequence	



Western blot analysis of lysates from HUVEC cells, using OR211 Antibody. The lane on the right is blocked with the synthesized peptide.



Western blot analysis of the lysates from HUVEC cells using OR211 antibody.



Immunofluorescence analysis of LOVO cells, using OR211 Antibody. The picture on the right is blocked with the synthesized peptide.