

Anti-OR2G2 antibody (241-290) (STJ94671)

STJ94671

GENERAL INFORMATION

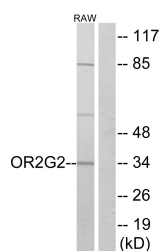
Product Type	Primary antibodies
Short Description	Rabbit polyclonal antibody anti-Olfactory receptor 2G2 (241-290) is suitable for use in Western Blot, Immunofluorescence and ELISA research applications.
Applications	WB/IF/ELISA
Host/Source	Rabbit
Reactivity	Human/Rat/Mouse

PRODUCT PROPERTIES

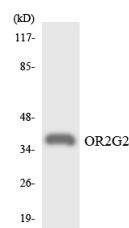
Clonality	Polyclonal
Clone ID	
Concentration	1 mg/mL
Conjugation	Unconjugated
Purification	The antibody was affinity-purified from rabbit antiserum by affinity-chromatography using epitope-specific immunogen.
Dilution Range	WB 1:500-1:2000 IF 1:200-1:1000 ELISA 1:20000
Formulation	Liquid in PBS containing 50% Glycerol, 0.5% BSA and 0.02% Sodium Azide.
Isotype	IgG
Storage Instruction	Store at -20°C for up to 1 year from the date of receipt, and avoid repeat freeze-thaw cycles.

TARGET INFORMATION

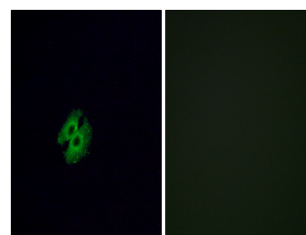
Gene ID	81470
Gene Symbol	OR2G2
Uniprot ID	OR2G2_HUMAN
Immunogen	The antiserum was produced against synthesized peptide derived from human OR2G2. AA range:241-290
Immunogen Region	241-290
Specificity	Olfactory receptor 2G2 Polyclonal Antibody detects endogenous levels of Olfactory receptor 2G2 protein.
Immunogen Sequence	



Western blot analysis of lysates from RAW264.7 cells, using OR2G2 Antibody. The lane on the right is blocked with the synthesized peptide.



Western blot analysis of the lysates from HT-29 cells using OR2G2 antibody.



Immunofluorescence analysis of A549 cells, using OR2G2 Antibody. The picture on the right is blocked with the synthesized peptide.