

Anti-OR2B2 antibody (241-290) (STJ94664)

STJ94664

GENERAL INFORMATION

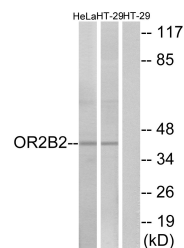
Product Type	Primary antibodies
Short Description	Rabbit polyclonal antibody anti-Olfactory receptor 2B2 (241-290) is suitable for use in Western Blot, Immunofluorescence and ELISA research applications.
Applications	WB/IF/ELISA
Host/Source	Rabbit
Reactivity	Human/Rat/Mouse

PRODUCT PROPERTIES

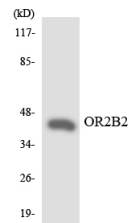
Clonality	Polyclonal
Clone ID	
Concentration	1 mg/mL
Conjugation	Unconjugated
Purification	The antibody was affinity-purified from rabbit antiserum by affinity-chromatography using epitope-specific immunogen.
Dilution Range	WB 1:500-1:2000 IF 1:200-1:1000 ELISA 1:10000
Formulation	Liquid in PBS containing 50% Glycerol, 0.5% BSA and 0.02% Sodium Azide.
Isotype	IgG
Storage Instruction	Store at -20°C for up to 1 year from the date of receipt, and avoid repeat freeze-thaw cycles.

TARGET INFORMATION

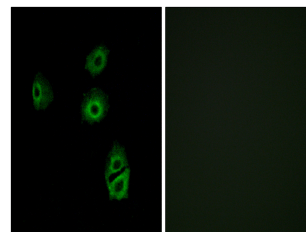
Gene ID	81697
Gene Symbol	OR2B2
Uniprot ID	OR2B2_HUMAN
Immunogen	The antiserum was produced against synthesized peptide derived from human OR2B2. AA range:241-290
Immunogen Region	241-290
Specificity	Olfactory receptor 2B2 Polyclonal Antibody detects endogenous levels of Olfactory receptor 2B2 protein.
Immunogen Sequence	



Western blot analysis of lysates from HeLa and HT-29 cells, using OR2B2 Antibody. The lane on the right is blocked with the synthesized peptide.



Western blot analysis of the lysates from Jurkat cells using OR2B2 antibody.



Immunofluorescence analysis of A549 cells, using OR2B2 Antibody. The picture on the right is blocked with the synthesized peptide.

This product is suitable for in-vitro studies under the RESEARCH USE ONLY [RUO] licence. This product must not be used as for diagnostic or other medical purposes.
St John's Laboratory Ltd, Knowledge Dock Business Centre, University Way, London, E16 2RD | Tel: 0208 223 3081