

Anti-OR2AG1/2 antibody (61-110) (STJ94658)

STJ94658

GENERAL INFORMATION

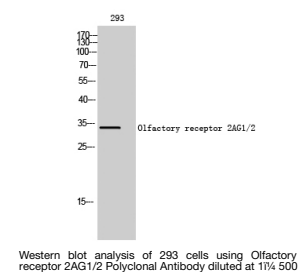
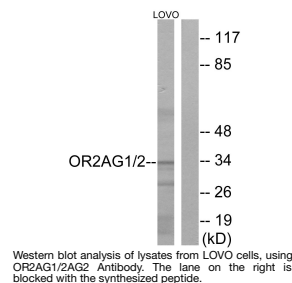
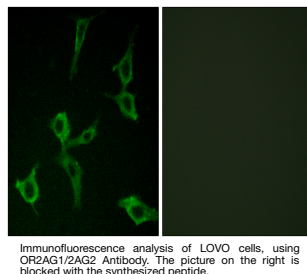
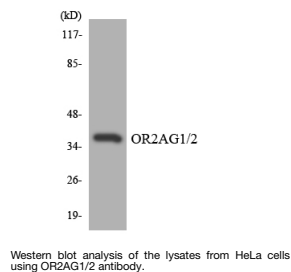
Product Type	Primary antibodies
Short Description	Rabbit polyclonal antibody anti-Olfactory receptor 2AG1/2 (61-110) is suitable for use in Western Blot, Immunofluorescence and ELISA research applications.
Applications	WB/IF/ELISA
Host/Source	Rabbit
Reactivity	Human/Rat/Mouse

PRODUCT PROPERTIES

Clonality	Polyclonal
Clone ID	
Concentration	1 mg/mL
Conjugation	Unconjugated
Purification	The antibody was affinity-purified from rabbit antiserum by affinity-chromatography using epitope-specific immunogen.
Dilution Range	WB 1:500-1:2000 IF 1:200-1:1000 ELISA 1:5000
Formulation	Liquid in PBS containing 50% Glycerol, 0.5% BSA and 0.02% Sodium Azide.
Isotype	IgG
Storage Instruction	Store at -20°C for up to 1 year from the date of receipt, and avoid repeat freeze-thaw cycles.

TARGET INFORMATION

Gene ID	144125 338755
Gene Symbol	OR2AG1 OR2AG2
Uniprot ID	O2AG1_HUMAN O2AG2_HUMAN
Immunogen	The antiserum was produced against synthesized peptide derived from human OR2AG1/2AG2. AA range:61-110
Immunogen Region	61-110
Specificity	Olfactory receptor 2AG1/2 Polyclonal Antibody detects endogenous levels of Olfactory receptor 2AG1/2 protein.
Immunogen Sequence	



This product is suitable for in-vitro studies under the RESEARCH USE ONLY [RUO] licence. This product must not be used as for diagnostic or other medical purposes.
St John's Laboratory Ltd, Knowledge Dock Business Centre, University Way, London, E16 2RD | Tel: 0208 223 3081