

## Anti-OR2A1; OR2A42 antibody (241-290) (STJ94655)

STJ94655

### GENERAL INFORMATION

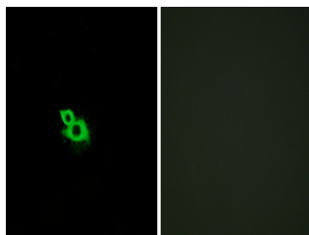
|                          |  |
|--------------------------|--|
| <b>Product Type</b>      | Primary antibodies   |
| <b>Short Description</b> | Rabbit polyclonal antibody anti-Olfactory receptor 2A1/2A42 (241-290) is suitable for use in Western Blot, Immunofluorescence and ELISA research applications. |
| <b>Applications</b>      | WB/IF/ELISA  |
| <b>Host/Source</b>       | Rabbit   |
| <b>Reactivity</b>        | Human/Rat/Mouse  |

### PRODUCT PROPERTIES

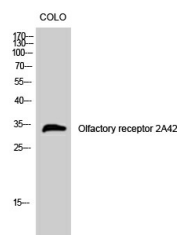
|                            |   |
|----------------------------|---|
| <b>Clonality</b>           | Polyclonal  |
| <b>Clone ID</b>            |   |
| <b>Concentration</b>       | 1 mg/mL   |
| <b>Conjugation</b>         | Unconjugated  |
| <b>Purification</b>        | The antibody was affinity-purified from rabbit antiserum by affinity-chromatography using epitope-specific immunogen. |
| <b>Dilution Range</b>      | WB 1:500-1:2000<br>IF 1:200-1:1000<br>ELISA 1:5000  |
| <b>Formulation</b>         | Liquid in PBS containing 50% Glycerol, 0.5% BSA and 0.02% Sodium Azide.   |
| <b>Isotype</b>             | IgG   |
| <b>Storage Instruction</b> | Store at -20°C for up to 1 year from the date of receipt, and avoid repeat freeze-thaw cycles.                        |

### TARGET INFORMATION

|                           |   |
|---------------------------|---|
| <b>Gene ID</b>            | 346528/402317   |
| <b>Gene Symbol</b>        | OR2A1.OR2A42  |
| <b>Uniprot ID</b>         | OR2A1_HUMAN   |
| <b>Immunogen</b>          | The antiserum was produced against synthesized peptide derived from human OR2A42. AA range:241-290        |
| <b>Immunogen Region</b>   | 241-290   |
| <b>Specificity</b>        | Olfactory receptor 2A42 Polyclonal Antibody detects endogenous levels of Olfactory receptor 2A42 protein. |
| <b>Immunogen Sequence</b> |   |



Immunofluorescence analysis of MCF7 cells, using OR2A42 Antibody. The picture on the right is blocked with the synthesized peptide.



Western blot analysis of COLO cells using Olfactory receptor 2A42 Polyclonal Antibody

This product is suitable for in-vitro studies under the RESEARCH USE ONLY [RUO] licence. This product must not be used as for diagnostic or other medical purposes.  
St John's Laboratory Ltd, Knowledge Dock Business Centre, University Way, London, E16 2RD | Tel: 0208 223 3081