

Anti-OR1D4/OR1D5 antibody (200-249) (STJ94648)

STJ94648

GENERAL INFORMATION

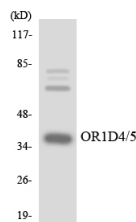
Product Type	Primary antibodies
Short Description	Rabbit polyclonal antibody anti-Olfactory receptor 1D4/5 (200-249) is suitable for use in Western Blot, Immunofluorescence and ELISA research applications.
Applications	WB/IF/ELISA
Host/Source	Rabbit
Reactivity	Human/Rat/Mouse

PRODUCT PROPERTIES

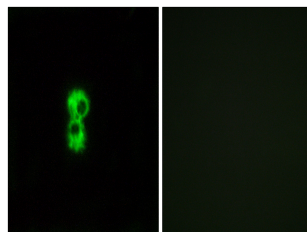
Clonality	Polyclonal
Clone ID	
Concentration	1 mg/mL
Conjugation	Unconjugated
Purification	The antibody was affinity-purified from rabbit antiserum by affinity-chromatography using epitope-specific immunogen.
Dilution Range	WB 1:500-1:2000 IF 1:200-1:1000 ELISA 1:20000
Formulation	Liquid in PBS containing 50% Glycerol, 0.5% BSA and 0.02% Sodium Azide.
Isotype	IgG
Storage Instruction	Store at -20°C for up to 1 year from the date of receipt, and avoid repeat freeze-thaw cycles.

TARGET INFORMATION

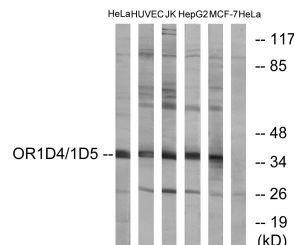
Gene ID	8386 NA
Gene Symbol	OR1D5 OR1D4
Uniprot ID	OR1D5_HUMAN OR1D4_HUMAN
Immunogen	The antiserum was produced against synthesized peptide derived from human OR1D4/5. AA range:200-249
Immunogen Region	200-249
Specificity	Olfactory receptor 1D4/1D5 Polyclonal Antibody detects endogenous levels of Olfactory receptor 1D4/1D5 protein.
Immunogen Sequence	



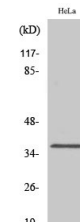
Western blot analysis of the lysates from K562 cells using OR1D4/5 antibody.



Immunofluorescence analysis of MCF7 cells, using OR1D4/5 Antibody. The picture on the right is blocked with the synthesized peptide.



Western blot analysis of lysates from HeLa, HUVEC, Jurkat, HepG2, and MCF-7 cells, using OR1D4/5 Antibody. The lane on the right is blocked with the synthesized peptide.



Western blot analysis of various cells using Olfactory receptor 1D4/1D5 Polyclonal Antibody diluted at 1/4 2000