

Anti-NTSR1 antibody (181-230) (STJ94568)

STJ94568

GENERAL INFORMATION

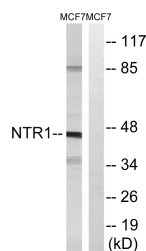
Product Type	Primary antibodies
Short Description	Rabbit polyclonal antibody anti-Neurotensin receptor type 1 (181-230) is suitable for use in Western Blot, Immunohistochemistry, Immunofluorescence and ELISA research applications.
Applications	WB/IHC/IF/ELISA
Host/Source	Rabbit
Reactivity	Human/Mouse

PRODUCT PROPERTIES

Clonality	Polyclonal
Clone ID	
Concentration	1 mg/mL
Conjugation	Unconjugated
Purification	The antibody was affinity-purified from rabbit antiserum by affinity-chromatography using epitope-specific immunogen.
Dilution Range	WB 1:500-1:2000 IHC 1:100-1:300 IF 1:200-1:1000 ELISA 1:5000
Formulation	Liquid in PBS containing 50% Glycerol, 0.5% BSA and 0.02% Sodium Azide.
Isotype	IgG
Storage Instruction	Store at -20°C for up to 1 year from the date of receipt, and avoid repeat freeze-thaw cycles.

TARGET INFORMATION

Gene ID	4923
Gene Symbol	NTSR1
Uniprot ID	NTR1_HUMAN
Immunogen	The antiserum was produced against synthesized peptide derived from human NTR1. AA range:181-230
Immunogen Region	181-230
Specificity	NTR1 Polyclonal Antibody detects endogenous levels of NTR1 protein.
Immunogen Sequence	



Western blot analysis of lysates from MCF7 cells, using NTR1 Antibody. The lane on the right is blocked with the synthesized peptide.