

Anti-NTF4 antibody (71-120) (STJ94562)

STJ94562

GENERAL INFORMATION

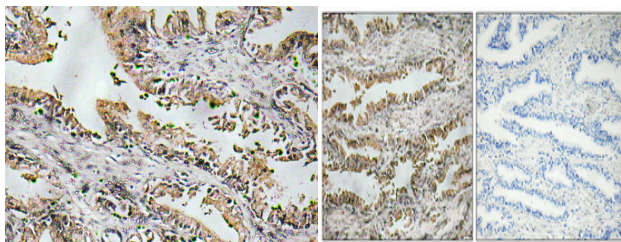
Product Type	Primary antibodies
Short Description	Rabbit polyclonal antibody anti-Neurotrophin-4 (71-120) is suitable for use in Immunohistochemistry, Immunofluorescence and ELISA research applications.
Applications	IHC/IF/ELISA
Host/Source	Rabbit
Reactivity	Human/Mouse/Rat

PRODUCT PROPERTIES

Clonality	Polyclonal
Clone ID	
Concentration	1 mg/mL
Conjugation	Unconjugated
Purification	The antibody was affinity-purified from rabbit antiserum by affinity-chromatography using epitope-specific immunogen.
Dilution Range	IHC 1:100-1:300 ELISA 1:10000 IF 1:50-200
Formulation	Liquid in PBS containing 50% Glycerol, 0.5% BSA and 0.02% Sodium Azide.
Isotype	IgG
Storage Instruction	Store at -20°C for up to 1 year from the date of receipt, and avoid repeat freeze-thaw cycles.

TARGET INFORMATION

Gene ID	4909
Gene Symbol	NTF4
Uniprot ID	NTF4_HUMAN
Immunogen	The antiserum was produced against synthesized peptide derived from human NT-4. AA range:71-120
Immunogen Region	71-120
Specificity	NT-4 Polyclonal Antibody detects endogenous levels of NT-4 protein.
Immunogen Sequence	



Immunohistochemistry analysis of NT-4 antibody in paraffin-embedded human prostate carcinoma tissue.

Immunohistochemical analysis of paraffin-embedded Human prostate cancer. Antibody was diluted at 1:100 (4Å°C overnight). High-pressure and temperature Tris-EDTA, pH8.0 was used for antigen retrieval. Negative control (right) obtained from antibody was pre-absorbed by immunogen peptide.