

Anti-NRF1 antibody (221-270) (STJ94553)

STJ94553

GENERAL INFORMATION

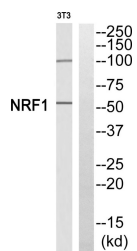
Product Type	Primary antibodies
Short Description	Rabbit polyclonal antibody anti-Nuclear respiratory factor 1 (221-270) is suitable for use in Western Blot and ELISA research applications.
Applications	WB/ELISA
Host/Source	Rabbit
Reactivity	Human/Mouse/Rat/Bovine

PRODUCT PROPERTIES

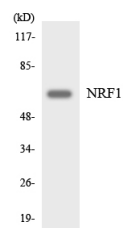
Clonality	Polyclonal
Clone ID	
Concentration	1 mg/mL
Conjugation	Unconjugated
Purification	The antibody was affinity-purified from rabbit antiserum by affinity-chromatography using epitope-specific immunogen.
Dilution Range	WB 1:500-1:2000 ELISA 1:5000
Formulation	Liquid in PBS containing 50% Glycerol, 0.5% BSA and 0.02% Sodium Azide.
Isotype	IgG
Storage Instruction	Store at -20°C for up to 1 year from the date of receipt, and avoid repeat freeze-thaw cycles.

TARGET INFORMATION

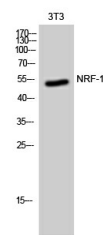
Gene ID	4899
Gene Symbol	NRF1
Uniprot ID	NRF1_HUMAN
Immunogen	The antiserum was produced against synthesized peptide derived from human NRF1. AA range:221-270
Immunogen Region	221-270
Specificity	NRF-1 Polyclonal Antibody detects endogenous levels of NRF-1 protein.
Immunogen Sequence	



Western blot analysis of NRF1 antibody. The lane on the right is blocked with the NRF1 peptide.



Western blot analysis of the lysates from HeLa cells using NRF1 antibody.



Western blot analysis of 3T3 cells using NRF-1 Polyclonal Antibody cells nucleus extracted by Minute TM Cytoplasmic and Nuclear Fractionation kit (SC-003, Inventiotech, MN, USA).

This product is suitable for in-vitro studies under the RESEARCH USE ONLY [RUO] licence. This product must not be used as for diagnostic or other medical purposes.
St John's Laboratory Ltd, Knowledge Dock Business Centre, University Way, London, E16 2RD | Tel: 0208 223 3081