

Anti-NPY1R antibody (221-270) (STJ94548)

STJ94548

GENERAL INFORMATION

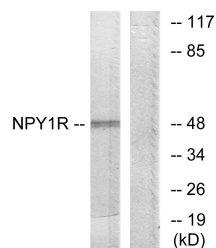
Product Type	Primary antibodies
Short Description	Rabbit polyclonal antibody anti-Neuropeptide Y receptor type 1 (221-270) is suitable for use in Western Blot, Immunofluorescence and ELISA research applications.
Applications	WB/IF/ELISA
Host/Source	Rabbit
Reactivity	Human/Mouse/Rat

PRODUCT PROPERTIES

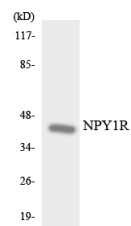
Clonality	Polyclonal
Clone ID	
Concentration	1 mg/mL
Conjugation	Unconjugated
Purification	The antibody was affinity-purified from rabbit antiserum by affinity-chromatography using epitope-specific immunogen.
Dilution Range	WB 1:500-1:2000 IF 1:200-1:1000 ELISA 1:5000
Formulation	Liquid in PBS containing 50% Glycerol, 0.5% BSA and 0.02% Sodium Azide.
Isotype	IgG
Storage Instruction	Store at -20°C for up to 1 year from the date of receipt, and avoid repeat freeze-thaw cycles.

TARGET INFORMATION

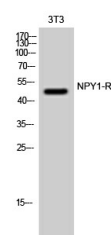
Gene ID	4886
Gene Symbol	NPY1R
Uniprot ID	NPY1R_HUMAN
Immunogen	The antiserum was produced against synthesized peptide derived from human NPY1R. AA range:221-270
Immunogen Region	221-270
Specificity	NPY1-R Polyclonal Antibody detects endogenous levels of NPY1-R protein.
Immunogen Sequence	



Western blot analysis of lysates from NIH/3T3 cells, using NPY1R Antibody. The lane on the right is blocked with the synthesized peptide.



Western blot analysis of the lysates from 293 cells using NPY1R antibody.



Western blot analysis of 3T3 cells using NPY1-R Polyclonal Antibody.