

Anti-ZNF638 antibody (1271-1320) (STJ94542)

STJ94542

GENERAL INFORMATION

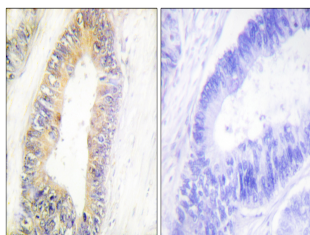
Product Type	Primary antibodies
Short Description	Rabbit polyclonal antibody anti-Zinc finger protein 638 (1271-1320) is suitable for use in Western Blot, Immunohistochemistry, Immunofluorescence and ELISA research applications.
Applications	WB/IHC/IF/ELISA
Host/Source	Rabbit
Reactivity	Human/Rat/Mouse

PRODUCT PROPERTIES

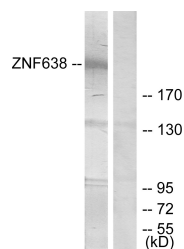
Clonality	Polyclonal
Clone ID	
Concentration	1 mg/mL
Conjugation	Unconjugated
Purification	The antibody was affinity-purified from rabbit antiserum by affinity-chromatography using epitope-specific immunogen.
Dilution Range	WB 1:500-1:2000 IHC 1:100-1:300 ELISA 1:20000 IF 1:50-200
Formulation	Liquid in PBS containing 50% Glycerol, 0.5% BSA and 0.02% Sodium Azide.
Isotype	IgG
Storage Instruction	Store at -20°C for up to 1 year from the date of receipt, and avoid repeat freeze-thaw cycles.

TARGET INFORMATION

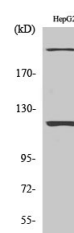
Gene ID	27332
Gene Symbol	ZNF638
Uniprot ID	ZNF638_HUMAN
Immunogen	The antiserum was produced against synthesized peptide derived from human ZNF638. AA range:1271-1320
Immunogen Region	1271-1320
Specificity	NP220 Polyclonal Antibody detects endogenous levels of NP220 protein.
Immunogen Sequence	



Immunohistochemistry analysis of paraffin-embedded human colon carcinoma tissue, using ZNF638 Antibody. The picture on the right is blocked with the synthesized peptide.



Western blot analysis of lysates from HepG2 cells, treated with serum 20% 15', using ZNF638 Antibody. The lane on the right is blocked with the synthesized peptide.



Western blot analysis of various cells using NP220 Polyclonal Antibody