

Anti-NOC3L antibody (415-464) (STJ94526)

STJ94526

GENERAL INFORMATION

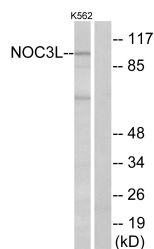
Product Type	Primary antibodies
Short Description	Rabbit polyclonal antibody anti-Nucleolar complex protein 3 homolog (415-464) is suitable for use in Western Blot and ELISA research applications.
Applications	WB/ELISA
Host/Source	Rabbit
Reactivity	Human/Mouse

PRODUCT PROPERTIES

Clonality	Polyclonal
Clone ID	
Concentration	1 mg/mL
Conjugation	Unconjugated
Purification	The antibody was affinity-purified from rabbit antiserum by affinity-chromatography using epitope-specific immunogen.
Dilution Range	WB 1:500-1:2000 ELISA 1:40000
Formulation	Liquid in PBS containing 50% Glycerol, 0.5% BSA and 0.02% Sodium Azide.
Isotype	IgG
Storage	Store at -20°C for up to 1 year from the date of receipt, and avoid repeat freeze-thaw cycles.
Instruction	

TARGET INFORMATION

Gene ID	64318
Gene Symbol	NOC3L
Uniprot ID	NOC3L_HUMAN
Immunogen	The antiserum was produced against synthesized peptide derived from human NOC3L. AA range:415-464
Immunogen Region	415-464
Specificity	NOC3L Polyclonal Antibody detects endogenous levels of NOC3L protein.
Immunogen Sequence	



Western blot analysis of lysates from K562 cells, using NOC3L Antibody. The lane on the right is blocked with the synthesized peptide.