

Anti-GRIN2D antibody (671-720) (STJ94520)

STJ94520

GENERAL INFORMATION

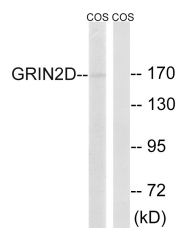
Product Type	Primary antibodies
Short Description	Rabbit polyclonal antibody anti-Glutamate receptor ionotropic, NMDA 2D (671-720) is suitable for use in Western Blot and ELISA research applications.
Applications	WB/ELISA
Host/Source	Rabbit
Reactivity	Human/Mouse/Rat/Monkey

PRODUCT PROPERTIES

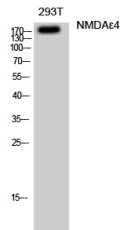
Clonality	Polyclonal
Clone ID	
Concentration	1 mg/mL
Conjugation	Unconjugated
Purification	The antibody was affinity-purified from rabbit antiserum by affinity-chromatography using epitope-specific immunogen.
Dilution Range	WB 1:500-1:2000 ELISA 1:40000
Formulation	Liquid in PBS containing 50% Glycerol, 0.5% BSA and 0.02% Sodium Azide.
Isotype	IgG
Storage	Store at -20°C for up to 1 year from the date of receipt, and avoid repeat freeze-thaw cycles.
Instruction	

TARGET INFORMATION

Gene ID	2906
Gene Symbol	GRIN2D
Uniprot ID	NMDE4_HUMAN
Immunogen	The antiserum was produced against synthesized peptide derived from human GRIN2D. AA range:671-720
Immunogen Region	671-720
Specificity	NMDA Epsilon 4 Polyclonal Antibody detects endogenous levels of NMDA Epsilon 4 protein.
Immunogen Sequence	



Western blot analysis of lysates from COS7 cells, using GRIN2D Antibody. The lane on the right is blocked with the synthesized peptide.



Western blot analysis of 293T cells using NMDA Epsilon 4 Polyclonal Antibody diluted at 1/14 500

This product is suitable for in-vitro studies under the RESEARCH USE ONLY [RUO] licence. This product must not be used as for diagnostic or other medical purposes.
St John's Laboratory Ltd, Knowledge Dock Business Centre, University Way, London, E16 2RD | Tel: 0208 223 3081