

## Anti-GRIN2C antibody (937-986) (STJ94518)

STJ94518

### GENERAL INFORMATION

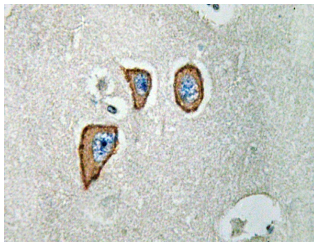
<b>Product Type</b>	Primary antibodies
<b>Short Description</b>	Rabbit polyclonal antibody anti-Glutamate receptor ionotropic, NMDA 2C (937-986) is suitable for use in Immunohistochemistry, Immunofluorescence and ELISA research applications.
<b>Applications</b>	IHC/IF/ELISA
<b>Host/Source</b>	Rabbit
<b>Reactivity</b>	Human/Rat/Mouse

### PRODUCT PROPERTIES

<b>Clonality</b>	Polyclonal
<b>Clone ID</b>	
<b>Concentration</b>	1 mg/mL
<b>Conjugation</b>	Unconjugated
<b>Purification</b>	The antibody was affinity-purified from rabbit antiserum by affinity-chromatography using epitope-specific immunogen.
<b>Dilution Range</b>	IHC 1:100-1:300 ELISA 1:5000 IF 1:50-200
<b>Formulation</b>	Liquid in PBS containing 50% Glycerol, 0.5% BSA and 0.02% Sodium Azide.
<b>Isotype</b>	IgG
<b>Storage Instruction</b>	Store at -20°C for up to 1 year from the date of receipt, and avoid repeat freeze-thaw cycles.

### TARGET INFORMATION

<b>Gene ID</b>	2905
<b>Gene Symbol</b>	GRIN2C
<b>Uniprot ID</b>	NMDE3_HUMAN
<b>Immunogen</b>	The antiserum was produced against synthesized peptide derived from human NMDAepsilon3. AA range:937-986
<b>Immunogen Region</b>	937-986
<b>Specificity</b>	NMDA Epsilon 3 Polyclonal Antibody detects endogenous levels of NMDA Epsilon 3 protein.
<b>Immunogen Sequence</b>	



Immunohistochemistry analysis of NMDA Epsilon 3 antibody in paraffin-embedded human brain tissue.

This product is suitable for in-vitro studies under the RESEARCH USE ONLY [RUO] licence. This product must not be used as for diagnostic or other medical purposes.  
St John's Laboratory Ltd, Knowledge Dock Business Centre, University Way, London, E16 2RD | Tel: 0208 223 3081