

Anti-NLE1 antibody (301-350) (STJ94510)

STJ94510

GENERAL INFORMATION

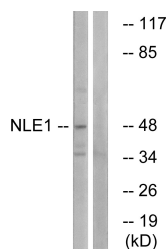
Product Type	Primary antibodies
Short Description	Rabbit polyclonal antibody anti-Notchless protein homolog 1 (301-350) is suitable for use in Western Blot, Immunohistochemistry, Immunofluorescence and ELISA research applications.
Applications	WB/IHC/IF/ELISA
Host/Source	Rabbit
Reactivity	Human/Monkey

PRODUCT PROPERTIES

Clonality	Polyclonal
Clone ID	
Concentration	1 mg/mL
Conjugation	Unconjugated
Purification	The antibody was affinity-purified from rabbit antiserum by affinity-chromatography using epitope-specific immunogen.
Dilution Range	WB 1:500-1:2000 IHC 1:100-1:300 ELISA 1:40000 IF 1:50-200
Formulation	Liquid in PBS containing 50% Glycerol, 0.5% BSA and 0.02% Sodium Azide.
Isotype	IgG
Storage Instruction	Store at -20°C for up to 1 year from the date of receipt, and avoid repeat freeze-thaw cycles.

TARGET INFORMATION

Gene ID	54475
Gene Symbol	NLE1
Uniprot ID	NLE1_HUMAN
Immunogen	The antiserum was produced against synthesized peptide derived from human NLE1. AA range:301-350
Immunogen Region	301-350
Specificity	NLE1 Polyclonal Antibody detects endogenous levels of NLE1 protein.
Immunogen Sequence	



Western blot analysis of lysates from COS cells, using NLE1 Antibody. The lane on the right is blocked with the synthesized peptide.