

## Anti-NKX2-6 antibody (91-140) (STJ94505)

STJ94505

### GENERAL INFORMATION

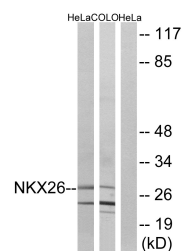
<b>Product Type</b>	Primary antibodies
<b>Short Description</b>	Rabbit polyclonal antibody anti-Homeobox protein Nkx-2.6 (91-140) is suitable for use in Western Blot and ELISA research applications.
<b>Applications</b>	WB/ELISA
<b>Host/Source</b>	Rabbit
<b>Reactivity</b>	Human/Rat/Mouse

### PRODUCT PROPERTIES

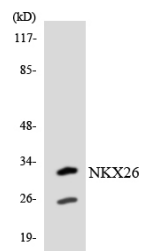
<b>Clonality</b>	Polyclonal
<b>Clone ID</b>	
<b>Concentration</b>	1 mg/mL
<b>Conjugation</b>	Unconjugated
<b>Purification</b>	The antibody was affinity-purified from rabbit antiserum by affinity-chromatography using epitope-specific immunogen.
<b>Dilution Range</b>	WB 1:500-1:2000 ELISA 1:40000
<b>Formulation</b>	Liquid in PBS containing 50% Glycerol, 0.5% BSA and 0.02% Sodium Azide.
<b>Isotype</b>	IgG
<b>Storage Instruction</b>	Store at -20°C for up to 1 year from the date of receipt, and avoid repeat freeze-thaw cycles.

### TARGET INFORMATION

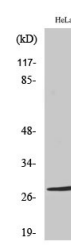
<b>Gene ID</b>	137814
<b>Gene Symbol</b>	NKX2-6
<b>Uniprot ID</b>	NKX26_HUMAN
<b>Immunogen</b>	The antiserum was produced against synthesized peptide derived from human NKX26. AA range:91-140
<b>Immunogen Region</b>	91-140
<b>Specificity</b>	Nkx-2.6 Polyclonal Antibody detects endogenous levels of Nkx-2.6 protein.
<b>Immunogen Sequence</b>	



Western blot analysis of lysates from HeLa and COLO cells, using NKX26 Antibody. The lane on the right is blocked with the synthesized peptide.



Western blot analysis of the lysates from Jurkat cells using NKX26 antibody.



Western blot analysis of various cells using Nkx-2.6 Polyclonal Antibody diluted at 1/14 500