

Anti-ZC3HC1 antibody (320-369) (STJ94494)

STJ94494

GENERAL INFORMATION

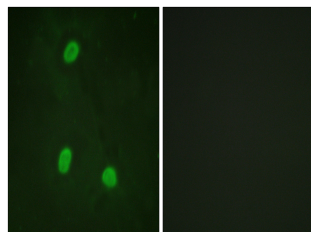
Product Type	Primary antibodies
Short Description	Rabbit polyclonal antibody anti-Zinc finger C3HC-type protein 1 (320-369) is suitable for use in Western Blot, Immunofluorescence and ELISA research applications.
Applications	WB/IF/ELISA
Host/Source	Rabbit
Reactivity	Human/Mouse/Rat/Monkey

PRODUCT PROPERTIES

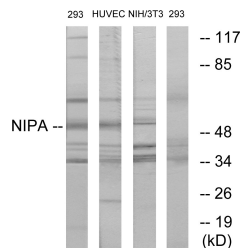
Clonality	Polyclonal
Clone ID	
Concentration	1 mg/mL
Conjugation	Unconjugated
Purification	The antibody was affinity-purified from rabbit antiserum by affinity-chromatography using epitope-specific immunogen.
Dilution Range	WB 1:500-1:2000 IF 1:200-1:1000 ELISA 1:40000
Formulation	Liquid in PBS containing 50% Glycerol, 0.5% BSA and 0.02% Sodium Azide.
Isotype	IgG
Storage Instruction	Store at -20°C for up to 1 year from the date of receipt, and avoid repeat freeze-thaw cycles.

TARGET INFORMATION

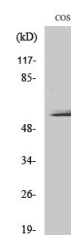
Gene ID	51530
Gene Symbol	ZC3HC1
Uniprot ID	ZC3C1_HUMAN
Immunogen	The antiserum was produced against synthesized peptide derived from human NIPA. AA range:320-369
Immunogen Region	320-369
Specificity	NIPA Polyclonal Antibody detects endogenous levels of NIPA protein.
Immunogen Sequence	



Immunofluorescence analysis of HeLa cells, using NIPA Antibody. The picture on the right is blocked with the synthesized peptide.



Western blot analysis of lysates from 293/HuVec/NIH/3T3, using NIPA Antibody. The lane on the right is blocked with the synthesized peptide.



Western blot analysis of various cells using NIPA Polyclonal Antibody diluted at 1:1000 cells nucleus extracted by Minute TM Cytoplasmic and Nuclear Fractionation kit (SC-003, Inventiotech, MN, USA).

This product is suitable for in-vitro studies under the RESEARCH USE ONLY [RUO] licence. This product must not be used as for diagnostic or other medical purposes.
St John's Laboratory Ltd, Knowledge Dock Business Centre, University Way, London, E16 2RD | Tel: 0208 223 3081