

Anti-NIFK antibody (200-249) (STJ94492)

STJ94492

GENERAL INFORMATION

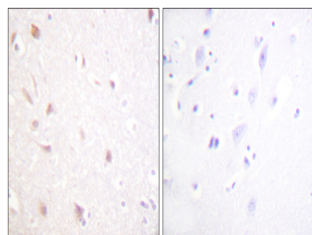
Product Type	Primary antibodies
Short Description	Rabbit polyclonal antibody anti-MK167 FHA domain-interacting nucleolar phosphoprotein (200-249) is suitable for use in Immunohistochemistry, Immunofluorescence, Western Blot and ELISA research applications.
Applications	IHC/IF/WB/ELISA
Host/Source	Rabbit
Reactivity	Human/Mouse

PRODUCT PROPERTIES

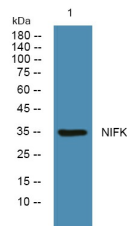
Clonality	Polyclonal
Clone ID	
Concentration	1 mg/mL
Conjugation	Unconjugated
Purification	The antibody was affinity-purified from rabbit antiserum by affinity-chromatography using epitope-specific immunogen.
Dilution	WB 1:500-2000
Range	IHC 1:100-1:300 IF 1:200-1:1000 ELISA 1:5000
Formulation	Liquid in PBS containing 50% Glycerol, 0.5% BSA and 0.02% Sodium Azide.
Isotype	IgG
Storage	Store at -20°C for up to 1 year from the date of receipt, and avoid repeat freeze-thaw cycles.
Instruction	

TARGET INFORMATION

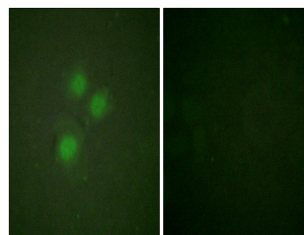
Gene ID	84365
Gene Symbol	NIFK
Uniprot ID	MK67L_HUMAN
Immunogen	The antiserum was produced against synthesized peptide derived from human NIFK. AA range:200-249
Immunogen	200-249
Region	
Specificity	NIFK Polyclonal Antibody detects endogenous levels of NIFK protein.
Immunogen	
Sequence	



Immunohistochemistry analysis of paraffin-embedded human brain tissue, using NIFK Antibody. The picture on the right is blocked with the synthesized peptide.



Western blot analysis of lysates from K562 cells, primary antibody was diluted at 1:1000, 4Å°C over night



Immunofluorescence analysis of HUVEC cells, using NIFK Antibody. The picture on the right is blocked with the synthesized peptide.

This product is suitable for in-vitro studies under the RESEARCH USE ONLY [RUO] licence. This product must not be used as for diagnostic or other medical purposes.
St John's Laboratory Ltd, Knowledge Dock Business Centre, University Way, London, E16 2RD | Tel: 0208 223 3081