

Anti-SLC9A6 antibody (551-600) (STJ94482)

STJ94482

GENERAL INFORMATION

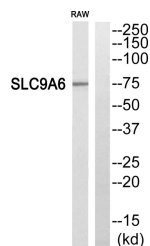
Product Type	Primary antibodies
Short Description	Rabbit polyclonal antibody anti-Sodium/hydrogen exchanger 6/H+ exchanger 6 (551-600) is suitable for use in Western Blot and ELISA research applications.
Applications	WB/ELISA
Host/Source	Rabbit
Reactivity	Human/Mouse

PRODUCT PROPERTIES

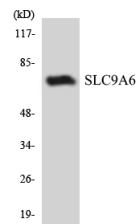
Clonality	Polyclonal
Clone ID	
Concentration	1 mg/mL
Conjugation	Unconjugated
Purification	The antibody was affinity-purified from rabbit antiserum by affinity-chromatography using epitope-specific immunogen.
Dilution Range	WB 1:500-1:2000 ELISA 1:40000
Formulation	Liquid in PBS containing 50% Glycerol, 0.5% BSA and 0.02% Sodium Azide.
Isotype	IgG
Storage	Store at -20°C for up to 1 year from the date of receipt, and avoid repeat freeze-thaw cycles.
Instruction	

TARGET INFORMATION

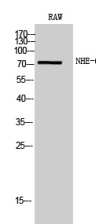
Gene ID	10479
Gene Symbol	SLC9A6
Uniprot ID	SL9A6_HUMAN
Immunogen	The antiserum was produced against synthesized peptide derived from human SLC9A6. AA range:551-600
Immunogen Region	551-600
Specificity	NHE-6 Polyclonal Antibody detects endogenous levels of NHE-6 protein.
Immunogen Sequence	



Western blot analysis of SLC9A6 Antibody. The lane on the right is blocked with the SLC9A6 peptide.



Western blot analysis of the lysates from COLO205 cells using SLC9A6 antibody.



Western blot analysis of RAW cells using NHE-6 Polyclonal Antibody.

This product is suitable for in-vitro studies under the RESEARCH USE ONLY [RUO] licence. This product must not be used as for diagnostic or other medical purposes.
St John's Laboratory Ltd, Knowledge Dock Business Centre, University Way, London, E16 2RD | Tel: 0208 223 3081