

Anti-RELA antibody (247-296) (STJ94473)

STJ94473

GENERAL INFORMATION

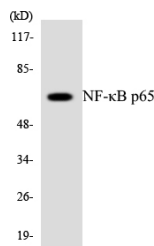
Product Type	Primary antibodies
Short Description	Rabbit polyclonal antibody anti-Transcription factor p65 (247-296) is suitable for use in Western Blot, Immunohistochemistry, Immunofluorescence and ELISA research applications.
Applications	WB/IHC/IF/ELISA
Host/Source	Rabbit
Reactivity	Human/Mouse/Rat/Pig

PRODUCT PROPERTIES

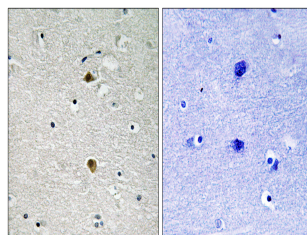
Clonality	Polyclonal
Clone ID	
Concentration	1 mg/mL
Conjugation	Unconjugated
Purification	The antibody was affinity-purified from rabbit antiserum by affinity-chromatography using epitope-specific immunogen.
Dilution Range	WB 1:500-1:2000 IHC 1:100-1:300 ELISA 1:5000 IF 1:50-200
Formulation	Liquid in PBS containing 50% Glycerol, 0.5% BSA and 0.02% Sodium Azide.
Isotype	IgG
Storage Instruction	Store at -20°C for up to 1 year from the date of receipt, and avoid repeat freeze-thaw cycles.

TARGET INFORMATION

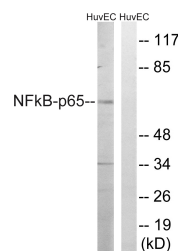
Gene ID	5970
Gene Symbol	RELA
Uniprot ID	TF65_HUMAN
Immunogen	The antiserum was produced against synthesized peptide derived from human NF-kappaB p65. AA range:247-296
Immunogen Region	247-296
Specificity	NF Kappa B-p65 Polyclonal Antibody detects endogenous levels of NF Kappa B-p65 protein.
Immunogen Sequence	



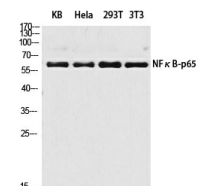
Western blot analysis of the lysates from HeLa cells using NF-Kappa B p65 antibody.



Immunohistochemistry analysis of paraffin-embedded human brain tissue, using NF-kappaB p65 Antibody. The picture on the right is blocked with the synthesized peptide.



Western blot analysis of lysates from HUVEC cells, treated with EPO 20U/ml 15', using NF-kappaB p65 Antibody. The lane on the right is blocked with the synthesized peptide.



Western blot analysis of KB HeLa 293T 3T3 lysis using NF Kappa B-p65 antibody. Antibody was diluted at 1:2000