

## Anti-RELA antibody (275-324) (STJ94469)

STJ94469

### GENERAL INFORMATION

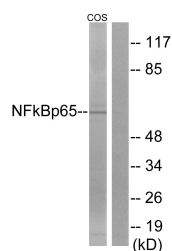
<b>Product Type</b>	Primary antibodies
<b>Short Description</b>	Rabbit polyclonal antibody anti-Transcription factor p65 (275-324) is suitable for use in Western Blot, Immunohistochemistry, Immunofluorescence and ELISA research applications.
<b>Applications</b>	WB/IHC/IF/ELISA
<b>Host/Source</b>	Rabbit
<b>Reactivity</b>	Human/Mouse/Monkey

### PRODUCT PROPERTIES

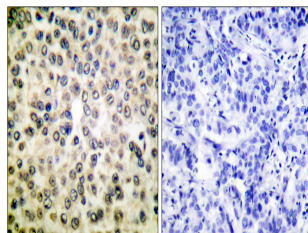
<b>Clonality</b>	Polyclonal
<b>Clone ID</b>	
<b>Concentration</b>	1 mg/mL
<b>Conjugation</b>	Unconjugated
<b>Purification</b>	The antibody was affinity-purified from rabbit antiserum by affinity-chromatography using epitope-specific immunogen.
<b>Dilution Range</b>	WB 1:500-1:2000 IHC 1:100-1:300 IF 1:200-1:1000 ELISA 1:10000
<b>Formulation</b>	Liquid in PBS containing 50% Glycerol, 0.5% BSA and 0.02% Sodium Azide.
<b>Isotype</b>	IgG
<b>Storage Instruction</b>	Store at -20°C for up to 1 year from the date of receipt, and avoid repeat freeze-thaw cycles.

### TARGET INFORMATION

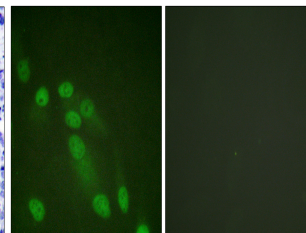
<b>Gene ID</b>	5970
<b>Gene Symbol</b>	RELA
<b>Uniprot ID</b>	TF65_HUMAN
<b>Immunogen</b>	The antiserum was produced against synthesized peptide derived from human NF-kappaB p65. AA range:275-324
<b>Immunogen Region</b>	275-324
<b>Specificity</b>	NF Kappa B-p65 Polyclonal Antibody detects endogenous levels of NF Kappa B-p65 protein.
<b>Immunogen Sequence</b>	



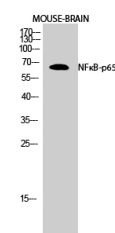
Western blot analysis of lysates from COS7 cells, treated with sorbitol 0.4M 24h, using NF-kappaB p65 Antibody. The lane on the right is blocked with the synthesized peptide.



Immunohistochemistry analysis of paraffin-embedded human breast carcinoma tissue, using NF-kappaB p65 Antibody. The picture on the right is blocked with the synthesized peptide.



Immunofluorescence analysis of HeLa cells, using NF-kappaB p65 Antibody. The picture on the right is blocked with the synthesized peptide.



Western blot analysis of mouse brain cells using NF Kappa B-p65 Polyclonal Antibody diluted at 1:1000

This product is suitable for in-vitro studies under the RESEARCH USE ONLY [RUO] licence. This product must not be used as for diagnostic or other medical purposes.  
St John's Laboratory Ltd, Knowledge Dock Business Centre, University Way, London, E16 2RD | Tel: 0208 223 3081