

Anti-NFKB1 antibody (896-945) (STJ94463)

STJ94463

GENERAL INFORMATION

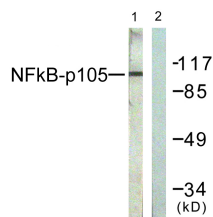
Product Type	Primary antibodies
Short Description	Rabbit polyclonal antibody anti-Nuclear factor NF-kappa-B p105 subunit (896-945) is suitable for use in Western Blot, Immunohistochemistry, Immunofluorescence and ELISA research applications.
Applications	WB/IHC/IF/ELISA
Host/Source	Rabbit
Reactivity	Human/Mouse

PRODUCT PROPERTIES

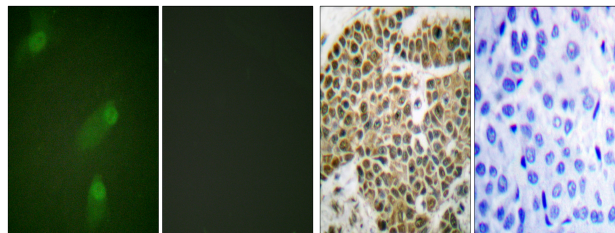
Clonality	Polyclonal
Clone ID	
Concentration	1 mg/mL
Conjugation	Unconjugated
Purification	The antibody was affinity-purified from rabbit antiserum by affinity-chromatography using epitope-specific immunogen.
Dilution	WB 1:500-1:2000
Range	IHC 1:100-1:300 IF 1:200-1:1000 ELISA 1:40000
Formulation	Liquid in PBS containing 50% Glycerol, 0.5% BSA and 0.02% Sodium Azide.
Isotype	IgG
Storage	Store at -20°C for up to 1 year from the date of receipt, and avoid repeat freeze-thaw cycles.
Instruction	

TARGET INFORMATION

Gene ID	4790
Gene Symbol	NFKB1
Uniprot ID	NFKB1_HUMAN
Immunogen	The antiserum was produced against synthesized peptide derived from human NF-kappaB p105/p50. AA range:896-945
Immunogen Region	896-945
Specificity	NF Kappa B-p105 Polyclonal Antibody detects endogenous levels of NF Kappa B-p105 protein.
Immunogen Sequence	

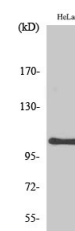


Western blot analysis of lysates from HeLa cells, treated with TNF-α 20ng/ml 5', using NF-kappaB p105/p50 Antibody. The lane on the right is blocked with the synthesized peptide.



Immunofluorescence analysis of HeLa cells, using NF-kappaB p105/p50 Antibody. The picture on the right is blocked with the synthesized peptide.

Immunohistochemistry analysis of paraffin-embedded human breast carcinoma tissue, using NF-kappaB p105/p50 Antibody. The picture on the right is blocked with the synthesized peptide.



Western blot analysis of various cells using NF Kappa B-p105 Polyclonal Antibody