

Anti-NFKB2 antibody (833-882) (STJ94458)

STJ94458

GENERAL INFORMATION

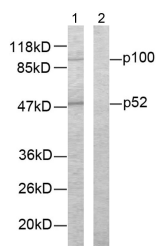
Product Type	Primary antibodies
Short Description	Rabbit polyclonal antibody anti-Nuclear factor NF-kappa-B p100 subunit (833-882) is suitable for use in Western Blot, Immunohistochemistry, Immunoprecipitation, Immunofluorescence and ELISA research applications.
Applications	WB/IHC/IP/IF/ELISA
Host/Source	Rabbit
Reactivity	Human/Mouse/Rat

PRODUCT PROPERTIES

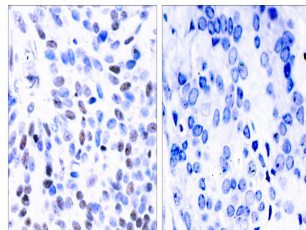
Clonality	Polyclonal
Clone ID	
Concentration	1 mg/mL
Conjugation	Unconjugated
Purification	The antibody was affinity-purified from rabbit antiserum by affinity-chromatography using epitope-specific immunogen.
Dilution Range	WB 1:500-1:2000 IHC 1:100-1:300 IP: 2-5 ug:mg lysate IF 1:200-1:1000 ELISA 1:20000
Formulation	Liquid in PBS containing 50% Glycerol, 0.5% BSA and 0.02% Sodium Azide.
Isotype	IgG
Storage Instruction	Store at -20°C for up to 1 year from the date of receipt, and avoid repeat freeze-thaw cycles.

TARGET INFORMATION

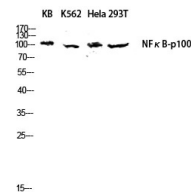
Gene ID	4791
Gene Symbol	NFKB2
Uniprot ID	NFKB2_HUMAN
Immunogen	The antiserum was produced against synthesized peptide derived from human NF-kappaB p100/p52. AA range:833-882
Immunogen Region	833-882
Specificity	NF Kappa B-p100 Polyclonal Antibody detects endogenous levels of NF Kappa B-p100 protein.
Immunogen Sequence	



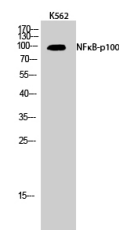
Western blot analysis of lysates from ovary cancer cells, using NF-kappaB p100/p52 Antibody. The lane on the right is blocked with the synthesized peptide.



Immunohistochemistry analysis of paraffin-embedded human breast carcinoma tissue, using NF-kappaB p100/p52 Antibody. The picture on the right is blocked with the synthesized peptide.



Western blot analysis of KB K562 HeLa 293T lysis using NF Kappa B-p100 antibody. Antibody was diluted at 1:1000



Western blot analysis of K562 cells using NF Kappa B-p100 Polyclonal Antibody diluted at 1:1000