

## Anti-NXPH4 antibody (216-265) (STJ94425)

STJ94425

### GENERAL INFORMATION

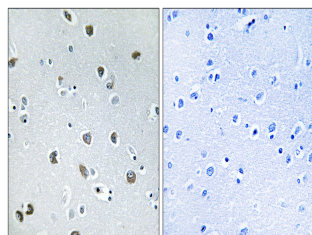
|                          |  |
|--------------------------|--|
| <b>Product Type</b>      | Primary antibodies   |
| <b>Short Description</b> | Rabbit polyclonal antibody anti-Neurexophilin-4 (216-265) is suitable for use in Western Blot, Immunohistochemistry, Immunofluorescence and ELISA research applications. |
| <b>Applications</b>      | WB/IHC/IF/ELISA  |
| <b>Host/Source</b>       | Rabbit   |
| <b>Reactivity</b>        | Human/Rat  |

### PRODUCT PROPERTIES

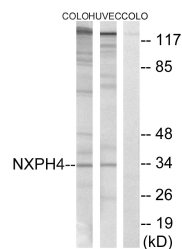
|                            |   |
|----------------------------|---|
| <b>Clonality</b>           | Polyclonal  |
| <b>Clone ID</b>            |   |
| <b>Concentration</b>       | 1 mg/mL   |
| <b>Conjugation</b>         | Unconjugated  |
| <b>Purification</b>        | The antibody was affinity-purified from rabbit antiserum by affinity-chromatography using epitope-specific immunogen. |
| <b>Dilution Range</b>      | WB 1:500-1:2000<br>IHC 1:100-1:300<br>ELISA 1:40000<br>IF 1:50-200  |
| <b>Formulation</b>         | Liquid in PBS containing 50% Glycerol, 0.5% BSA and 0.02% Sodium Azide.   |
| <b>Isotype</b>             | IgG   |
| <b>Storage Instruction</b> | Store at -20°C for up to 1 year from the date of receipt, and avoid repeat freeze-thaw cycles.                        |

### TARGET INFORMATION

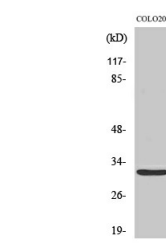
|                           |   |
|---------------------------|---|
| <b>Gene ID</b>            | 11247   |
| <b>Gene Symbol</b>        | NXPH4   |
| <b>Uniprot ID</b>         | NXPH4_HUMAN   |
| <b>Immunogen</b>          | The antiserum was produced against synthesized peptide derived from human NXPH4. AA range:216-265 |
| <b>Immunogen Region</b>   | 216-265   |
| <b>Specificity</b>        | Neurexophilin-4 Polyclonal Antibody detects endogenous levels of Neurexophilin-4 protein.         |
| <b>Immunogen Sequence</b> |   |



Immunohistochemistry analysis of paraffin-embedded human brain tissue, using NXPH4 Antibody. The picture on the right is blocked with the synthesized peptide.



Western blot analysis of lysates from COLO and HUVEC cells, using NXPH4 Antibody. The lane on the right is blocked with the synthesized peptide.



Western blot analysis of various cells using Neurexophilin-4 Polyclonal Antibody