

Anti-ELK3 antibody (323-372) (STJ94405)

STJ94405

GENERAL INFORMATION

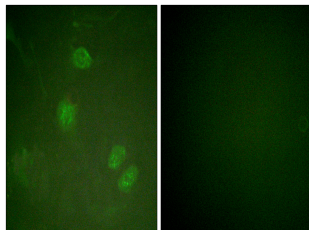
Product Type	Primary antibodies
Short Description	Rabbit polyclonal antibody anti-ETS domain-containing protein Elk-3 (323-372) is suitable for use in Immunofluorescence and ELISA research applications.
Applications	IF/ELISA
Host/Source	Rabbit
Reactivity	Human/Mouse

PRODUCT PROPERTIES

Clonality	Polyclonal
Clone ID	
Concentration	1 mg/mL
Conjugation	Unconjugated
Purification	The antibody was affinity-purified from rabbit antiserum by affinity-chromatography using epitope-specific immunogen.
Dilution Range	IF 1:200-1:1000 ELISA 1:20000
Formulation	Liquid in PBS containing 50% Glycerol, 0.5% BSA and 0.02% Sodium Azide.
Isotype	IgG
Storage	Store at -20°C for up to 1 year from the date of receipt, and avoid repeat freeze-thaw cycles.
Instruction	

TARGET INFORMATION

Gene ID	2004
Gene Symbol	ELK3
Uniprot ID	ELK3_HUMAN
Immunogen	The antiserum was produced against synthesized peptide derived from human Elk3. AA range:323-372
Immunogen Region	323-372
Specificity	Net Polyclonal Antibody detects endogenous levels of Net protein.
Immunogen Sequence	



Immunofluorescence analysis of HeLa cells, using Elk3 Antibody. The picture on the right is blocked with the synthesized peptide.