

## Anti-NDUFS3 antibody (117-166) (STJ94383)

STJ94383

### GENERAL INFORMATION

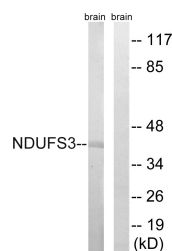
<b>Product Type</b>	Primary antibodies
<b>Short Description</b>	Rabbit polyclonal antibody anti-NADH dehydrogenase iron-sulfur protein 3, mitochondrial (117-166) is suitable for use in Western Blot and ELISA research applications.
<b>Applications</b>	WB/ELISA
<b>Host/Source</b>	Rabbit
<b>Reactivity</b>	Human/Mouse

### PRODUCT PROPERTIES

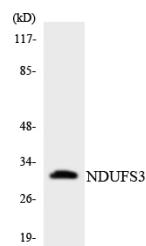
<b>Clonality</b>	Polyclonal
<b>Clone ID</b>	
<b>Concentration</b>	1 mg/mL
<b>Conjugation</b>	Unconjugated
<b>Purification</b>	The antibody was affinity-purified from rabbit antiserum by affinity-chromatography using epitope-specific immunogen.
<b>Dilution Range</b>	WB 1:500-1:2000 ELISA 1:40000
<b>Formulation</b>	Liquid in PBS containing 50% Glycerol, 0.5% BSA and 0.02% Sodium Azide.
<b>Isotype</b>	IgG
<b>Storage</b>	Store at -20°C for up to 1 year from the date of receipt, and avoid repeat freeze-thaw cycles.
<b>Instruction</b>	

### TARGET INFORMATION

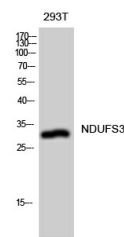
<b>Gene ID</b>	4722
<b>Gene Symbol</b>	NDUFS3
<b>Uniprot ID</b>	NDUS3_HUMAN
<b>Immunogen</b>	The antiserum was produced against synthesized peptide derived from human NDUFS3. AA range:117-166
<b>Immunogen Region</b>	117-166
<b>Specificity</b>	NDUFS3 Polyclonal Antibody detects endogenous levels of NDUFS3 protein.
<b>Immunogen Sequence</b>	



Western blot analysis of lysates from mouse brain, using NDUFS3 Antibody. The lane on the right is blocked with the synthesized peptide.



Western blot analysis of the lysates from COLO205 cells using NDUFS3 antibody.



Western blot analysis of 293T cells using NDUFS3 Polyclonal Antibody diluted at 1:1000.

This product is suitable for in-vitro studies under the RESEARCH USE ONLY [RUO] licence. This product must not be used as for diagnostic or other medical purposes.  
St John's Laboratory Ltd, Knowledge Dock Business Centre, University Way, London, E16 2RD | Tel: 0208 223 3081