

Anti-NDUFS1 antibody (620-669) (STJ94382)

STJ94382

GENERAL INFORMATION

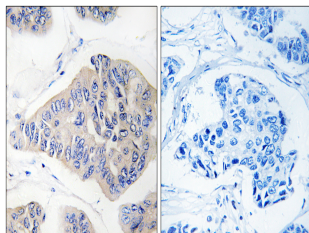
| | |
|--------------------------|---|
| Product Type | Primary antibodies |
| Short Description | Rabbit polyclonal antibody anti-NADH-ubiquinone oxidoreductase 75 kDa subunit, mitochondrial (620-669) is suitable for use in Western Blot, Immunohistochemistry, Immunofluorescence and ELISA research applications. |
| Applications | WB/IHC/IF/ELISA |
| Host/Source | Rabbit |
| Reactivity | Human/Mouse/Rat |

PRODUCT PROPERTIES

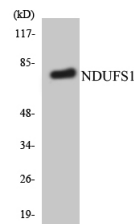
| | |
|----------------------------|---|
| Clonality | Polyclonal |
| Clone ID | |
| Concentration | 1 mg/mL |
| Conjugation | Unconjugated |
| Purification | The antibody was affinity-purified from rabbit antiserum by affinity-chromatography using epitope-specific immunogen. |
| Dilution Range | WB 1:500-1:2000 IHC 1:100-1:300 ELISA 1:40000 IF 1:50-200 |
| Formulation | Liquid in PBS containing 50% Glycerol, 0.5% BSA and 0.02% Sodium Azide. |
| Isotype | IgG |
| Storage Instruction | Store at -20°C for up to 1 year from the date of receipt, and avoid repeat freeze-thaw cycles. |

TARGET INFORMATION

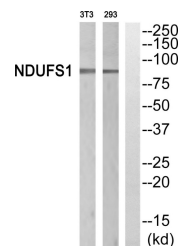
| | |
|---------------------------|--|
| Gene ID | 4719 |
| Gene Symbol | NDUFS1 |
| Uniprot ID | NDUS1_HUMAN |
| Immunogen | The antiserum was produced against synthesized peptide derived from human NDUFS1. AA range:620-669 |
| Immunogen Region | 620-669 |
| Specificity | NDUFS1 Polyclonal Antibody detects endogenous levels of NDUFS1 protein. |
| Immunogen Sequence | |



Immunohistochemistry analysis of paraffin-embedded human breast carcinoma, using NDUFS1 Antibody. The lane on the right is blocked with the NDUFS1 peptide.



Western blot analysis of the lysates from HepG2 cells using NDUFS1 antibody.



Western blot analysis of NDUFS1 Antibody. The lane on the right is blocked with the NDUFS1 peptide.