

Anti-SLC24A4 antibody (328-377) (STJ94359)

STJ94359

GENERAL INFORMATION

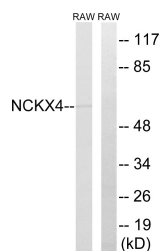
Product Type	Primary antibodies
Short Description	Rabbit polyclonal antibody anti-Sodium/potassium/calcium exchanger 4/K ⁺ /Ca ²⁺ -exchange protein 4 (328-377) is suitable for use in Western Blot and ELISA research applications.
Applications	WB/ELISA
Host/Source	Rabbit
Reactivity	Human/Mouse/Rat

PRODUCT PROPERTIES

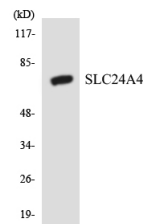
Clonality	Polyclonal
Clone ID	
Concentration	1 mg/mL
Conjugation	Unconjugated
Purification	The antibody was affinity-purified from rabbit antiserum by affinity-chromatography using epitope-specific immunogen.
Dilution Range	WB 1:500-1:2000 ELISA 1:40000
Formulation	Liquid in PBS containing 50% Glycerol, 0.5% BSA and 0.02% Sodium Azide.
Isotype	IgG
Storage	Store at -20°C for up to 1 year from the date of receipt, and avoid repeat freeze-thaw cycles.
Instruction	

TARGET INFORMATION

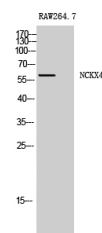
Gene ID	123041
Gene Symbol	SLC24A4
Uniprot ID	NCKX4_HUMAN
Immunogen	The antiserum was produced against synthesized peptide derived from human SLC24A4. AA range:328-377
Immunogen Region	328-377
Specificity	NCKX4 Polyclonal Antibody detects endogenous levels of NCKX4 protein.
Immunogen Sequence	



Western blot analysis of lysates from RAW264.7 cells, using SLC24A4 Antibody. The lane on the right is blocked with the synthesized peptide.



Western blot analysis of the lysates from HeLa cells using SLC24A4 antibody.



Western blot analysis of RAW264.7 cells using NCKX4 Polyclonal Antibody

This product is suitable for in-vitro studies under the RESEARCH USE ONLY [RUO] licence. This product must not be used as for diagnostic or other medical purposes.
St John's Laboratory Ltd, Knowledge Dock Business Centre, University Way, London, E16 2RD | Tel: 0208 223 3081