

Anti-CDH2 antibody (721-770) (STJ94353)

STJ94353

GENERAL INFORMATION

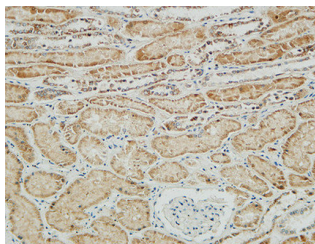
Product Type	Primary antibodies
Short Description	Rabbit polyclonal antibody anti-Cadherin-2 (721-770) is suitable for use in Western Blot, Immunohistochemistry, Immunofluorescence and ELISA research applications.
Applications	WB/IHC/IF/ELISA
Host/Source	Rabbit
Reactivity	Human/Mouse/Rat

PRODUCT PROPERTIES

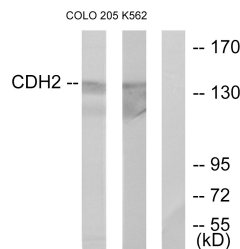
Clonality	Polyclonal
Clone ID	
Concentration	1 mg/mL
Conjugation	Unconjugated
Purification	The antibody was affinity-purified from rabbit antiserum by affinity-chromatography using epitope-specific immunogen.
Dilution Range	WB 1:500-1:2000 IHC 1:100-1:300 IF 1:200-1:1000 ELISA 1:10000
Formulation	Liquid in PBS containing 50% Glycerol, 0.5% BSA and 0.02% Sodium Azide.
Isotype	IgG
Storage Instruction	Store at -20°C for up to 1 year from the date of receipt, and avoid repeat freeze-thaw cycles.

TARGET INFORMATION

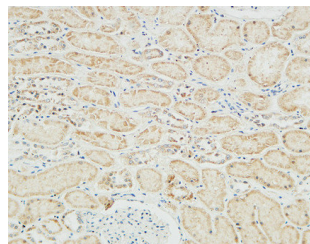
Gene ID	1000
Gene Symbol	CDH2
Uniprot ID	CADH2_HUMAN
Immunogen	The antiserum was produced against synthesized peptide derived from human CDH2. AA range:721-770
Immunogen Region	721-770
Specificity	N-cadherin Polyclonal Antibody detects endogenous levels of N-cadherin protein.
Immunogen Sequence	



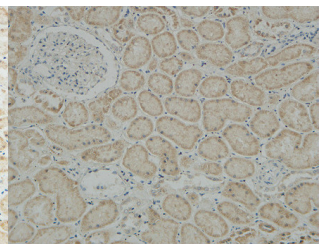
Immunohistochemical analysis of paraffin-embedded Human kidney. 1. Antibody was diluted at 1:200 (4A°C overnight). 2. High-pressure and temperature EDTA, pH8.0 was used for antigen retrieval. 3. Secondary antibody was diluted at 1:200 (room temperature, 30min).



Western blot analysis of lysates from COLO205 and K562 cells, using CDH2 Antibody. The lane on the right is blocked with the synthesized peptide.



Immunohistochemical analysis of paraffin-embedded Human kidney. 1. Antibody was diluted at 1:200 (4A°C overnight). 2. High-pressure and temperature EDTA, pH8.0 was used for antigen retrieval. 3. Secondary antibody was diluted at 1:200 (room temperature, 30min).



Immunohistochemical analysis of paraffin-embedded Human kidney. 1. Antibody was diluted at 1:200 (4A°C overnight). 2. High-pressure and temperature EDTA, pH8.0 was used for antigen retrieval. 3. Secondary antibody was diluted at 1:200 (room temperature, 30min).

This product is suitable for in-vitro studies under the RESEARCH USE ONLY [RUO] licence. This product must not be used as for diagnostic or other medical purposes.

St John's Laboratory Ltd, Knowledge Dock Business Centre, University Way, London, E16 2RD | Tel: 0208 223 3081