

## Anti-NAA15 antibody (221-270) (STJ94346)

STJ94346

### GENERAL INFORMATION

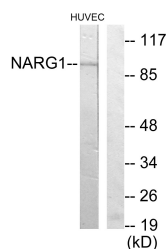
<b>Product Type</b>	Primary antibodies
<b>Short Description</b>	Rabbit polyclonal antibody anti-N-alpha-acetyltransferase 15, NatA auxiliary subunit (221-270) is suitable for use in Western Blot, Immunohistochemistry, Immunofluorescence and ELISA research applications.
<b>Applications</b>	WB/IHC/IF/ELISA
<b>Host/Source</b>	Rabbit
<b>Reactivity</b>	Human/Mouse

### PRODUCT PROPERTIES

<b>Clonality</b>	Polyclonal
<b>Clone ID</b>	
<b>Concentration</b>	1 mg/mL
<b>Conjugation</b>	Unconjugated
<b>Purification</b>	The antibody was affinity-purified from rabbit antiserum by affinity-chromatography using epitope-specific immunogen.
<b>Dilution</b>	WB 1:500-1:2000
<b>Range</b>	IHC 1:100-1:300 IF 1:200-1:1000 ELISA 1:20000
<b>Formulation</b>	Liquid in PBS containing 50% Glycerol, 0.5% BSA and 0.02% Sodium Azide.
<b>Isotype</b>	IgG
<b>Storage</b>	Store at -20°C for up to 1 year from the date of receipt, and avoid repeat freeze-thaw cycles.
<b>Instruction</b>	

### TARGET INFORMATION

<b>Gene ID</b>	80155
<b>Gene Symbol</b>	NAA15
<b>Uniprot ID</b>	NAA15_HUMAN
<b>Immunogen</b>	The antiserum was produced against synthesized peptide derived from human NARG1. AA range:221-270
<b>Immunogen</b>	221-270
<b>Region</b>	
<b>Specificity</b>	NARG1 Polyclonal Antibody detects endogenous levels of NARG1 protein.
<b>Immunogen</b>	
<b>Sequence</b>	



Western blot analysis of lysates from HUVEC cells, using NARG1 Antibody. The lane on the right is blocked with the synthesized peptide.



Western blot analysis of various cells using NARG1 Polyclonal Antibody

This product is suitable for in-vitro studies under the RESEARCH USE ONLY [RUO] licence. This product must not be used as for diagnostic or other medical purposes.  
St John's Laboratory Ltd, Knowledge Dock Business Centre, University Way, London, E16 2RD | Tel: 0208 223 3081