

Anti-ATP1A2 antibody (971-1020) (STJ94339)

STJ94339

GENERAL INFORMATION

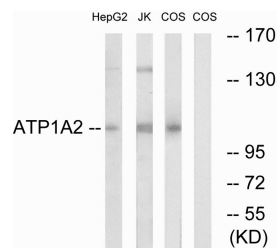
Product Type	Primary antibodies
Short Description	Rabbit polyclonal antibody anti-Sodium/potassium-transporting ATPase subunit alpha-2/K+ ATPase alpha-2 subunit (971-1020) is suitable for use in Western Blot, ELISA and Immunohistochemistry research applications.
Applications	WB/ELISA/IHC
Host/Source	Rabbit
Reactivity	Human/Mouse/Rat/Monkey

PRODUCT PROPERTIES

Clonality	Polyclonal
Clone ID	
Concentration	1 mg/mL
Conjugation	Unconjugated
Purification	The antibody was affinity-purified from rabbit antiserum by affinity-chromatography using epitope-specific immunogen.
Dilution	WB 1:500-2000
Range	IHC-p 1:50-300 ELISA 2000-20000
Formulation	Liquid in PBS containing 50% Glycerol, 0.5% BSA and 0.02% Sodium Azide.
Isotype	IgG
Storage	Store at -20°C for up to 1 year from the date of receipt, and avoid repeat freeze-thaw cycles.
Instruction	

TARGET INFORMATION

Gene ID	477
Gene Symbol	ATP1A2
Uniprot ID	AT1A2_HUMAN
Immunogen	The antiserum was produced against synthesized peptide derived from human ATP1A2. AA range:971-1020
Immunogen Region	971-1020
Specificity	Na+/K+-ATPase Alpha 2 Polyclonal Antibody detects endogenous levels of Na+/K+-ATPase Alpha 2 protein.
Immunogen Sequence	



Western blot analysis of lysates from COS7 cells, HepG2 cells, and Jurkat cells, using ATP1A2 Antibody. The lane on the right is blocked with the synthesized peptide.

This product is suitable for in-vitro studies under the RESEARCH USE ONLY [RUO] licence. This product must not be used as for diagnostic or other medical purposes.
St John's Laboratory Ltd, Knowledge Dock Business Centre, University Way, London, E16 2RD | Tel: 0208 223 3081