

Anti-SCN9A antibody (651-700) (STJ94332)

STJ94332

GENERAL INFORMATION

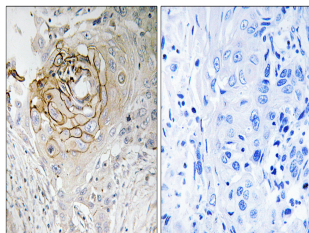
Product Type	Primary antibodies
Short Description	Rabbit polyclonal antibody anti-Sodium channel protein type 9 subunit alpha (651-700) is suitable for use in Western Blot, Immunohistochemistry, Immunofluorescence and ELISA research applications.
Applications	WB/IHC/IF/ELISA
Host/Source	Rabbit
Reactivity	Human/Mouse/Rat

PRODUCT PROPERTIES

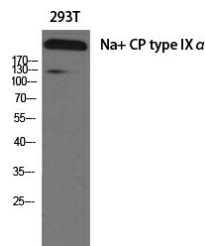
Clonality	Polyclonal
Clone ID	
Concentration	1 mg/mL
Conjugation	Unconjugated
Purification	The antibody was affinity-purified from rabbit antiserum by affinity-chromatography using epitope-specific immunogen.
Dilution Range	WB 1:500-1:2000 IHC 1:100-1:300 ELISA 1:40000 IF 1:50-200
Formulation	Liquid in PBS containing 50% Glycerol, 0.5% BSA and 0.02% Sodium Azide.
Isotype	IgG
Storage Instruction	Store at -20°C for up to 1 year from the date of receipt, and avoid repeat freeze-thaw cycles.

TARGET INFORMATION

Gene ID	6335
Gene Symbol	SCN9A
Uniprot ID	SCN9A_HUMAN
Immunogen	The antiserum was produced against synthesized peptide derived from human SCN9A. AA range:651-700
Immunogen Region	651-700
Specificity	Na ⁺ CP type IX Alpha Polyclonal Antibody detects endogenous levels of Na ⁺ CP type IX Alpha protein.
Immunogen Sequence	



Immunohistochemistry analysis of paraffin-embedded human lung carcinoma tissue, using SCN9A Antibody. The picture on the right is blocked with the synthesized peptide.



Western blot analysis of various cells using Na⁺ CP type IX Alpha Polyclonal Antibody diluted at 1:1000