

Anti-SCN2B antibody (71-120 aa) (STJ94330)

STJ94330

GENERAL INFORMATION

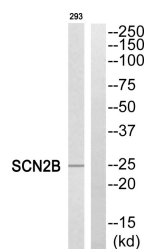
Product Type	Primary antibodies
Short Description	Rabbit polyclonal antibody anti-Sodium channel subunit beta-2 (71-120 aa) is suitable for use in Western Blot, ELISA and Immunohistochemistry research applications.
Applications	WB/ELISA/IHC
Host/Source	Rabbit
Reactivity	Human/Mouse/Rat

PRODUCT PROPERTIES

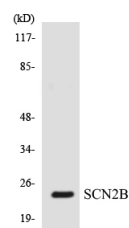
Clonality	Polyclonal
Clone ID	
Concentration	1 mg/mL
Conjugation	Unconjugated
Purification	The antibody was affinity-purified from rabbit antiserum by affinity-chromatography using epitope-specific immunogen.
Dilution Range	WB 1:500-2000 IHC-P 1:50-300 ELISA 2000-20000
Formulation	Liquid in PBS containing 50% Glycerol, 0.5% BSA and 0.02% Sodium Azide.
Isotype	IgG
Storage Instruction	Store at -20°C for up to 1 year from the date of receipt, and avoid repeat freeze-thaw cycles.

TARGET INFORMATION

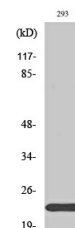
Gene ID	6327
Gene Symbol	SCN2B
Uniprot ID	SCN2B_HUMAN
Immunogen	The antiserum was produced against synthesized peptide derived from the human SCN2B at the amino acid range 71-120
Immunogen Region	71-120 aa
Specificity	Na ⁺ CP type II Beta Polyclonal Antibody detects endogenous levels of Na ⁺ CP type II Beta protein.
Immunogen Sequence	



Western blot analysis of SCN2B Antibody. The lane on the right is blocked with the SCN2B peptide.



Western blot analysis of the lysates from HepG2 cells using SCN2B antibody.



Western blot analysis of various cells using Na⁺ CP type II Beta Polyclonal Antibody.

This product is suitable for in-vitro studies under the RESEARCH USE ONLY [RUO] licence. This product must not be used as for diagnostic or other medical purposes.
St John's Laboratory Ltd, Knowledge Dock Business Centre, University Way, London, E16 2RD | Tel: 0208 223 3081