

Anti-PPP1R12A antibody (621-670) (STJ94320)

STJ94320

GENERAL INFORMATION

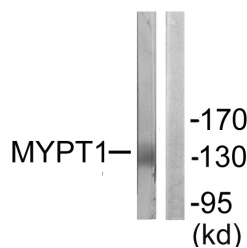
Product Type	Primary antibodies
Short Description	Rabbit polyclonal antibody anti-Protein phosphatase 1 regulatory subunit 12A (621-670) is suitable for use in Western Blot, Immunohistochemistry, Immunofluorescence and ELISA research applications.
Applications	WB/IHC/IF/ELISA
Host/Source	Rabbit
Reactivity	Human/Mouse/Rat/Monkey

PRODUCT PROPERTIES

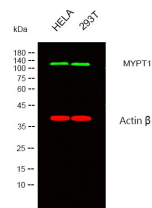
Clonality	Polyclonal
Clone ID	
Concentration	1 mg/mL
Conjugation	Unconjugated
Purification	The antibody was affinity-purified from rabbit antiserum by affinity-chromatography using epitope-specific immunogen.
Dilution	WB 1:500-1:2000
Range	IHC 1:100-1:300 ELISA 1:5000 IF 1:50-200
Formulation	Liquid in PBS containing 50% Glycerol, 0.5% BSA and 0.02% Sodium Azide.
Isotype	IgG
Storage Instruction	Store at -20°C for up to 1 year from the date of receipt, and avoid repeat freeze-thaw cycles.

TARGET INFORMATION

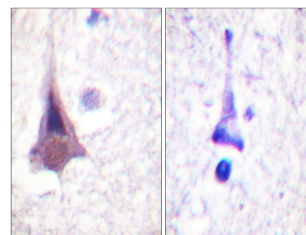
Gene ID	4659
Gene Symbol	PPP1R12A
Uniprot ID	MYPT1_HUMAN
Immunogen	The antiserum was produced against synthesized peptide derived from human MYPT1. AA range:621-670
Immunogen	621-670
Region	
Specificity	MYPT1 Polyclonal Antibody detects endogenous levels of MYPT1 protein.
Immunogen Sequence	



Western blot analysis of lysates from NIH/3T3 cells, using MYPT1 Antibody. The lane on the right is blocked with the synthesized peptide.



Western blot analysis of lysates from HeLa, 293T cells, (Green) primary antibody was diluted at 1:1000, 4A°C over night, secondary antibody was diluted at 1:10000, 37A°C 1hour. (Red) loading control antibody was diluted at 1:5000 as loading control, 4A°C over night, secondary antibody was diluted at 1:10000, 37A°C 1hour.



Immunohistochemistry analysis of paraffin-embedded human brain tissue, using MYPT1 Antibody. The picture on the right is blocked with the synthesized peptide.