

Anti-MTM1 antibody (241-290) (STJ94317)

STJ94317

GENERAL INFORMATION

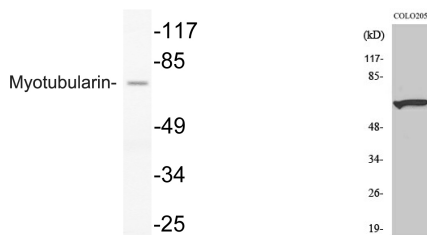
Product Type	Primary antibodies
Short Description	Rabbit polyclonal antibody anti-Myotubularin (241-290) is suitable for use in Western Blot and Immunohistochemistry research applications.
Applications	WB/IHC
Host/Source	Rabbit
Reactivity	Human/Mouse

PRODUCT PROPERTIES

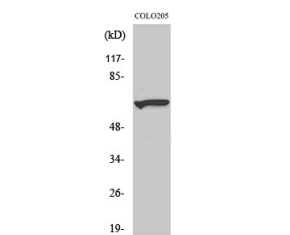
Clonality	Polyclonal
Clone ID	
Concentration	1 mg/mL
Conjugation	Unconjugated
Purification	The antibody was affinity-purified from rabbit antiserum by affinity-chromatography using epitope-specific immunogen.
Dilution Range	WB 1:500-2000 IHC-p 1:50-300
Formulation	Liquid in PBS containing 50% Glycerol, 0.5% BSA and 0.02% Sodium Azide.
Isotype	IgG
Storage Instruction	Store at -20°C for up to 1 year from the date of receipt, and avoid repeat freeze-thaw cycles.

TARGET INFORMATION

Gene ID	4534
Gene Symbol	MTM1
Uniprot ID	MTM1_HUMAN
Immunogen	The antiserum was produced against synthesized peptide derived from human Myotubularin. AA range:241-290
Immunogen Region	241-290
Specificity	Myotubularin Polyclonal Antibody detects endogenous levels of Myotubularin protein.
Immunogen Sequence	



Western blot analysis of lysate from COLO205 cells, using Myotubularin antibody.



Western blot analysis of various cells using Myotubularin Polyclonal Antibody diluted at 1:500

This product is suitable for in-vitro studies under the RESEARCH USE ONLY [RUO] licence. This product must not be used as for diagnostic or other medical purposes.
St John's Laboratory Ltd, Knowledge Dock Business Centre, University Way, London, E16 2RD | Tel: 0208 223 3081