

Anti-MYH14 antibody (1051-1100) (STJ94298)

STJ94298

GENERAL INFORMATION

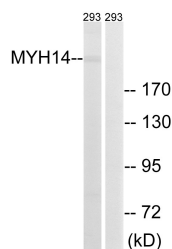
Product Type	Primary antibodies
Short Description	Rabbit polyclonal antibody anti-Myosin-14 (1051-1100) is suitable for use in Western Blot, Immunohistochemistry, Immunofluorescence and ELISA research applications.
Applications	WB/IHC/IF/ELISA
Host/Source	Rabbit
Reactivity	Human/Mouse

PRODUCT PROPERTIES

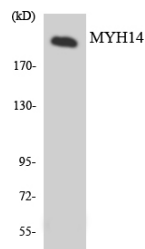
Clonality	Polyclonal
Clone ID	
Concentration	1 mg/mL
Conjugation	Unconjugated
Purification	The antibody was affinity-purified from rabbit antiserum by affinity-chromatography using epitope-specific immunogen.
Dilution Range	WB 1:500-1:2000 IHC 1:100-1:300 ELISA 1:5000 IF 1:50-200
Formulation	Liquid in PBS containing 50% Glycerol, 0.5% BSA and 0.02% Sodium Azide.
Isotype	IgG
Storage Instruction	Store at -20°C for up to 1 year from the date of receipt, and avoid repeat freeze-thaw cycles.

TARGET INFORMATION

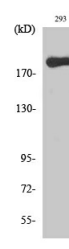
Gene ID	79784
Gene Symbol	MYH14
Uniprot ID	MYH14_HUMAN
Immunogen	The antiserum was produced against synthesized peptide derived from human MYH14. AA range:1051-1100
Immunogen Region	1051-1100
Specificity	MYH14 Polyclonal Antibody detects endogenous levels of MYH14 protein.
Immunogen Sequence	



Western blot analysis of lysates from 293 cells, using MYH14 Antibody. The lane on the right is blocked with the synthesized peptide.



Western blot analysis of the lysates from HeLa cells using MYH14 antibody.



Western blot analysis of various cells using MYH14 Polyclonal Antibody diluted at 1/4 1000