

Anti-MYD88 antibody (171-220) (STJ94293)

STJ94293

GENERAL INFORMATION

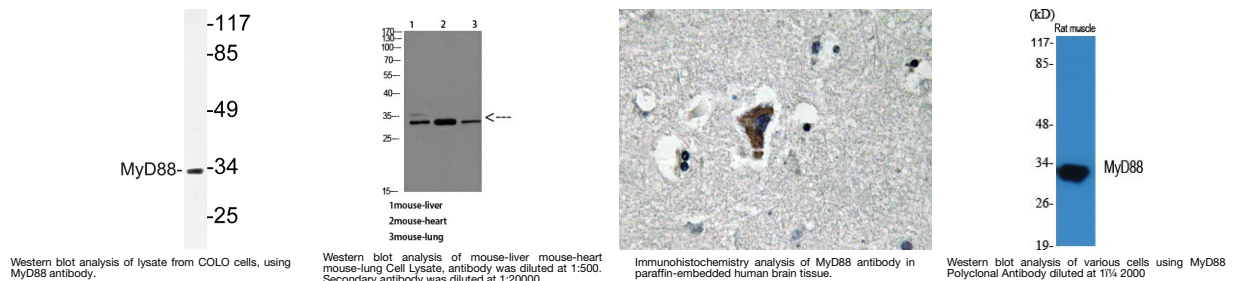
| | |
|--------------------------|---|
| Product Type | Primary antibodies |
| Short Description | Rabbit polyclonal antibody anti-Myeloid differentiation primary response protein MyD88 (171-220) is suitable for use in Immunofluorescence, Western Blot, Immunohistochemistry and ELISA research applications. |
| Applications | IF/WB/IHC/ELISA |
| Host/Source | Rabbit |
| Reactivity | Human/Mouse/Rat/Pig |

PRODUCT PROPERTIES

| | |
|----------------------|---|
| Clonality | Polyclonal |
| Clone ID | |
| Concentration | 1 mg/mL |
| Conjugation | Unconjugated |
| Purification | The antibody was affinity-purified from rabbit antiserum by affinity-chromatography using epitope-specific immunogen. |
| Dilution | IF 1:50-200 |
| Range | WB 1:500-1:2000 IHC 1:100-1:300 ICC 1:200-1:1000 ELISA 1:20000 |
| Formulation | Liquid in PBS containing 50% Glycerol, 0.5% BSA and 0.02% Sodium Azide. |
| Isotype | IgG |
| Storage | Store at -20°C for up to 1 year from the date of receipt, and avoid repeat freeze-thaw cycles. |
| Instruction | |

TARGET INFORMATION

| | |
|---------------------------|---|
| Gene ID | 4615 |
| Gene Symbol | MYD88 |
| Uniprot ID | MYD88_HUMAN |
| Immunogen | The antiserum was produced against synthesized peptide derived from human MyD88. AA range:171-220 |
| Immunogen Region | 171-220 |
| Specificity | MyD88 Polyclonal Antibody detects endogenous levels of MyD88 protein. |
| Immunogen Sequence | |



This product is suitable for in-vitro studies under the RESEARCH USE ONLY [RUO] licence. This product must not be used as for diagnostic or other medical purposes.
St John's Laboratory Ltd, Knowledge Dock Business Centre, University Way, London, E16 2RD | Tel: 0208 223 3081