

Anti-MTHFR antibody (314-363) (STJ94274)

STJ94274

GENERAL INFORMATION

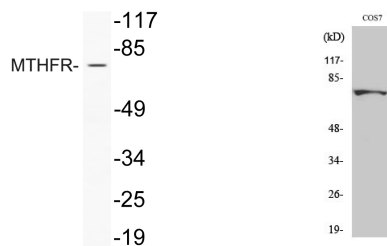
Product Type	Primary antibodies
Short Description	Rabbit polyclonal antibody anti-Methylenetetrahydrofolate reductase (314-363) is suitable for use in Western Blot, ELISA and Immunohistochemistry research applications.
Applications	WB/ELISA/IHC
Host/Source	Rabbit
Reactivity	Human/Mouse/Monkey

PRODUCT PROPERTIES

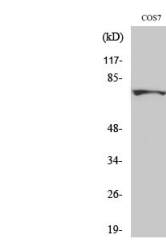
Clonality	Polyclonal
Clone ID	
Concentration	1 mg/mL
Conjugation	Unconjugated
Purification	The antibody was affinity-purified from rabbit antiserum by affinity-chromatography using epitope-specific immunogen.
Dilution Range	WB 1:500-2000 IHC-p 1:50-300 ELISA 2000-20000
Formulation	Liquid in PBS containing 50% Glycerol, 0.5% BSA and 0.02% Sodium Azide.
Isotype	IgG
Storage Instruction	Store at -20°C for up to 1 year from the date of receipt, and avoid repeat freeze-thaw cycles.

TARGET INFORMATION

Gene ID	4524
Gene Symbol	MTHFR
Uniprot ID	MTHR_HUMAN
Immunogen	The antiserum was produced against synthesized peptide derived from human MTHFR. AA range:314-363
Immunogen Region	314-363
Specificity	MTHFR Polyclonal Antibody detects endogenous levels of MTHFR protein.
Immunogen Sequence	



Western blot analysis of lysate from COLO205 cells treated with Forskolin, using MTHFR antibody.



Western blot analysis of various cells using MTHFR Polyclonal Antibody.

This product is suitable for in-vitro studies under the RESEARCH USE ONLY [RUO] licence. This product must not be used as for diagnostic or other medical purposes.
St John's Laboratory Ltd, Knowledge Dock Business Centre, University Way, London, E16 2RD | Tel: 0208 223 3081