

## Anti-YBX2 antibody (281-330) (STJ94271)

STJ94271

### GENERAL INFORMATION

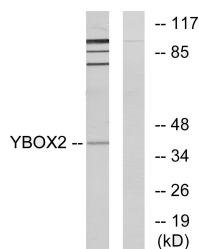
<b>Product Type</b>	Primary antibodies
<b>Short Description</b>	Rabbit polyclonal antibody anti-Y-box-binding protein 2 (281-330) is suitable for use in Western Blot, Immunohistochemistry, Immunofluorescence and ELISA research applications.
<b>Applications</b>	WB/IHC/IF/ELISA
<b>Host/Source</b>	Rabbit
<b>Reactivity</b>	Human/Mouse

### PRODUCT PROPERTIES

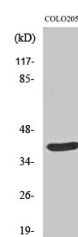
<b>Clonality</b>	Polyclonal
<b>Clone ID</b>	
<b>Concentration</b>	1 mg/mL
<b>Conjugation</b>	Unconjugated
<b>Purification</b>	The antibody was affinity-purified from rabbit antiserum by affinity-chromatography using epitope-specific immunogen.
<b>Dilution Range</b>	WB 1:500-1:2000 IHC 1:100-1:300 IF 1:200-1:1000 ELISA 1:10000
<b>Formulation</b>	Liquid in PBS containing 50% Glycerol, 0.5% BSA and 0.02% Sodium Azide.
<b>Isotype</b>	IgG
<b>Storage Instruction</b>	Store at -20°C for up to 1 year from the date of receipt, and avoid repeat freeze-thaw cycles.

### TARGET INFORMATION

<b>Gene ID</b>	51087
<b>Gene Symbol</b>	YBX2
<b>Uniprot ID</b>	YBOX2_HUMAN
<b>Immunogen</b>	The antiserum was produced against synthesized peptide derived from human YBOX2. AA range:281-330
<b>Immunogen Region</b>	281-330
<b>Specificity</b>	MSY2 Polyclonal Antibody detects endogenous levels of MSY2 protein.
<b>Immunogen Sequence</b>	



Western blot analysis of lysates from COLO205 cells, using YBOX2 Antibody. The lane on the right is blocked with the synthesized peptide.



Western blot analysis of various cells using MSY2 Polyclonal Antibody