

Anti-STK24 antibody (319-368) (STJ94269)

STJ94269

GENERAL INFORMATION

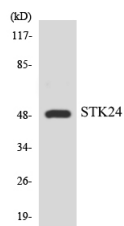
Product Type	Primary antibodies
Short Description	Rabbit polyclonal antibody anti-Serine/threonine-protein kinase 24 (319-368) is suitable for use in Western Blot, Immunohistochemistry, Immunofluorescence and ELISA research applications.
Applications	WB/IHC/IF/ELISA
Host/Source	Rabbit
Reactivity	Human/Mouse/Rat

PRODUCT PROPERTIES

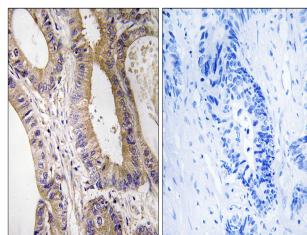
Clonality	Polyclonal
Clone ID	
Concentration	1 mg/mL
Conjugation	Unconjugated
Purification	The antibody was affinity-purified from rabbit antiserum by affinity-chromatography using epitope-specific immunogen.
Dilution Range	WB 1:500-1:2000 IHC 1:100-1:300 ELISA 1:40000 IF 1:50-200
Formulation	Liquid in PBS containing 50% Glycerol, 0.5% BSA and 0.02% Sodium Azide.
Isotype	IgG
Storage Instruction	Store at -20°C for up to 1 year from the date of receipt, and avoid repeat freeze-thaw cycles.

TARGET INFORMATION

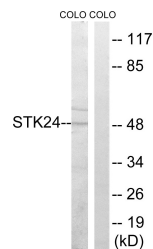
Gene ID	8428
Gene Symbol	STK24
Uniprot ID	STK24_HUMAN
Immunogen	The antiserum was produced against synthesized peptide derived from human STK24. AA range:319-368
Immunogen Region	319-368
Specificity	MST-3 Polyclonal Antibody detects endogenous levels of MST-3 protein.
Immunogen Sequence	



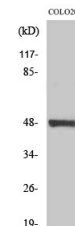
Western blot analysis of the lysates from COLO205 cells using STK24 antibody.



Immunohistochemistry analysis of paraffin-embedded human colon carcinoma tissue, using STK24 Antibody. The picture on the right is blocked with the synthesized peptide.



Western blot analysis of lysates from COLO cells, using STK24 Antibody. The lane on the right is blocked with the synthesized peptide.



Western blot analysis of various cells using MST-3 Polyclonal Antibody diluted at 1:1000