

Anti-MRPS7 antibody (91-140) (STJ94257)

STJ94257

GENERAL INFORMATION

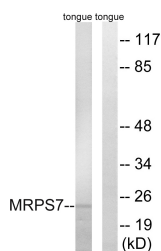
Product Type	Primary antibodies
Short Description	Rabbit polyclonal antibody anti-Small ribosomal subunit protein uS7m (91-140) is suitable for use in Western Blot, Immunohistochemistry, Immunofluorescence and ELISA research applications.
Applications	WB/IHC/IF/ELISA
Host/Source	Rabbit
Reactivity	Human/Mouse/Rat

PRODUCT PROPERTIES

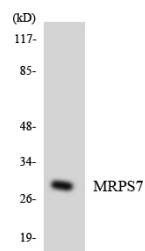
Clonality	Polyclonal
Clone ID	
Concentration	1 mg/mL
Conjugation	Unconjugated
Purification	The antibody was affinity-purified from rabbit antiserum by affinity-chromatography using epitope-specific immunogen.
Dilution Range	WB 1:500-1:2000 IHC 1:100-1:300 ELISA 1:40000 IF 1:50-200
Formulation	Liquid in PBS containing 50% Glycerol, 0.5% BSA and 0.02% Sodium Azide.
Isotype	IgG
Storage Instruction	Store at -20°C for up to 1 year from the date of receipt, and avoid repeat freeze-thaw cycles.

TARGET INFORMATION

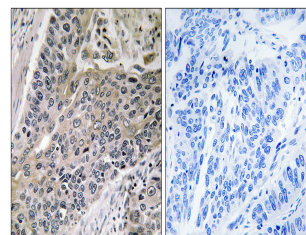
Gene ID	51081
Gene Symbol	MRPS7
Uniprot ID	RT07_HUMAN
Immunogen	The antiserum was produced against synthesized peptide derived from human MRPS7. AA range:91-140
Immunogen Region	91-140
Specificity	MRP-S7 Polyclonal Antibody detects endogenous levels of MRP-S7 protein.
Immunogen Sequence	



Western blot analysis of lysates from rat tongue cells, using MRPS7 Antibody. The lane on the right is blocked with the synthesized peptide.



Western blot analysis of the lysates from HeLa cells using MRPS7 antibody.



Immunohistochemistry analysis of paraffin-embedded human lung carcinoma tissue, using MRPS7 Antibody. The picture on the right is blocked with the synthesized peptide.