

Anti-MRPS33 antibody (51-100) (STJ94252)

STJ94252

GENERAL INFORMATION

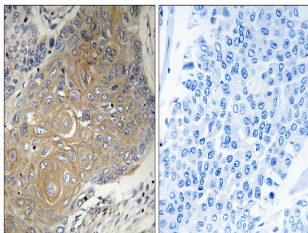
Product Type	Primary antibodies
Short Description	Rabbit polyclonal antibody anti-Small ribosomal subunit protein mS33 (51-100) is suitable for use in Immunohistochemistry, Immunofluorescence and ELISA research applications.
Applications	IHC/IF/ELISA
Host/Source	Rabbit
Reactivity	Human/Mouse/Rat

PRODUCT PROPERTIES

Clonality	Polyclonal
Clone ID	
Concentration	1 mg/mL
Conjugation	Unconjugated
Purification	The antibody was affinity-purified from rabbit antiserum by affinity-chromatography using epitope-specific immunogen.
Dilution Range	IHC 1:100-1:300 ELISA 1:10000 IF 1:50-200
Formulation	Liquid in PBS containing 50% Glycerol, 0.5% BSA and 0.02% Sodium Azide.
Isotype	IgG
Storage Instruction	Store at -20°C for up to 1 year from the date of receipt, and avoid repeat freeze-thaw cycles.

TARGET INFORMATION

Gene ID	51650
Gene Symbol	MRPS33
Uniprot ID	RT33_HUMAN
Immunogen	The antiserum was produced against synthesized peptide derived from human MRPS33. AA range:51-100
Immunogen Region	51-100
Specificity	MRP-S33 Polyclonal Antibody detects endogenous levels of MRP-S33 protein.
Immunogen Sequence	



Immunohistochemistry analysis of paraffin-embedded human lung carcinoma tissue, using MRPS33 Antibody. The picture on the right is blocked with the synthesized peptide.