

Anti-MRPL50 antibody (109-158) (STJ94234)

STJ94234

GENERAL INFORMATION

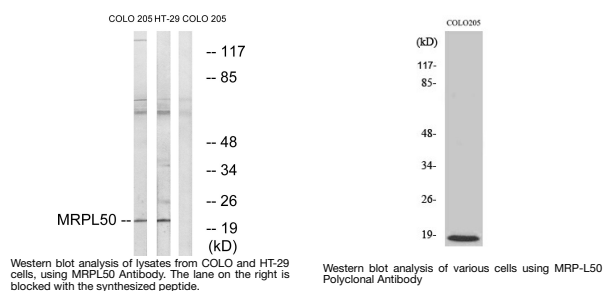
Product Type	Primary antibodies
Short Description	Rabbit polyclonal antibody anti-Large ribosomal subunit protein mL50 (109-158) is suitable for use in Western Blot, ELISA and Immunohistochemistry research applications.
Applications	WB/ELISA/IHC
Host/Source	Rabbit
Reactivity	Human/Rat/Mouse

PRODUCT PROPERTIES

Clonality	Polyclonal
Clone ID	
Concentration	1 mg/mL
Conjugation	Unconjugated
Purification	The antibody was affinity-purified from rabbit antiserum by affinity-chromatography using epitope-specific immunogen.
Dilution Range	WB 1:500-2000 IHC-p 1:50-300 ELISA 2000-20000
Formulation	Liquid in PBS containing 50% Glycerol, 0.5% BSA and 0.02% Sodium Azide.
Isotype	IgG
Storage Instruction	Store at -20°C for up to 1 year from the date of receipt, and avoid repeat freeze-thaw cycles.

TARGET INFORMATION

Gene ID	54534
Gene Symbol	MRPL50
Uniprot ID	RM50_HUMAN
Immunogen	The antiserum was produced against synthesized peptide derived from human MRPL50. AA range:109-158
Immunogen Region	109-158
Specificity	MRP-L50 Polyclonal Antibody detects endogenous levels of MRP-L50 protein.
Immunogen Sequence	



This product is suitable for in-vitro studies under the RESEARCH USE ONLY [RUO] licence. This product must not be used as for diagnostic or other medical purposes.
St John's Laboratory Ltd, Knowledge Dock Business Centre, University Way, London, E16 2RD | Tel: 0208 223 3081